

A few notes about PDF patterns from Designs by Jude. . . .

This PDF pattern requires legal size paper (8.5" x 14") or A4 size paper (8.27" x 11.69", 210mm x 297mm). It will **not** print on standard letter.

Patterns containing larger pieces will need to be taped together before cutting out the fabric.

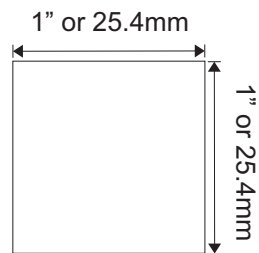
Be advised that this document needs to be printed to it's original scale. Please ensure that the printing options below are **not** selected.

Do Not: Rotate and Center, Fit to Page, Reduce to Fit or adjust the scale of this document.

Refer to the scale marker below to ensure that this copy is printed at the correct scale.

This PDF pattern is not licensed for commercial use and may not be shared, duplicated or distributed.

Designs by Jude, All RIGHTS RESERVED. Personal use only. Not licensed for commercial use.



Designs by Jude

www.fletcherpatterncompany.com

VDC Club Grace

The Wish

for 16.5" RTB101 Dolls



Designed by

Tamara Casey

\$12.95



VDC Club Grace Collaboration

The Wish

for 16" RTB101 Body Dolls

Fabric: silk, satin, or similar fabrics for the gown, faux fur, or fuzzy fabric for the wrap

Lining: polyester lining, silk essence

Notions: zipper, snap set, matching thread, heat erasable marker, fray check

Achieve professional results by following a few rules

1. Press the garment as you work through each step. Press seams open and flat where applicable.
2. Tie darts and other loose ends of thread off, rather than backstitching.
3. Use a small stitch and clip seams close to the stitches to reduce bulk.
RST=right sides together WST=wrong sides together

Gown

1. Take a few reinforcement stitches at the clip on the gown side front piece.
2. Sew the darts in the gown side front pieces. Press the darts down.
3. Right sides together, sew the gown side front sections to the gown front.
4. Clip into the seam and press the seam open.
5. RST, sew the gown side back sections to the gown back sections. Press the seams open.
6. RST, place the back sections together and sew the center back seam from the hem to the dot.
7. Press the back seam open.
8. Pin the zipper to the opening and machine or hand sew in place.
9. Sew the gown back and front together at the side seam. Clip the seam and press open.
10. Sew the darts in the gown side front lining pieces.
11. Press the darts down.
12. Sew the lining side front sections to the lining front. Press the seams open.
13. Sew the lining side back sections to the back sections. Press the seams open.
14. RST, sew the lining back sections together from the hem edge to the dot.
15. Press the lining center back seam open.
16. Sew the lining front and back sections together at the side seams. Press the seams open.
17. To ensure the lining doesn't show at the hem edge, trim 1/16-1/8 off.
18. RST, pin the gown lining to the gown and sew around the hem edge.
19. Trim the seam allowance. Press the lining to the inside of the gown and press the hem.
20. Next, pull the lining up through the top of the gown.
21. Rotate the lining 180 degrees and pin it to the gown bodice with the folded edges of the the center back seam matching up with the zipper tape on each side.
22. Sew across the top edge and up both straps, leaving the end of each strap unsewn.
23. Check both sides of the garment and make sure the right and left back opening are even at the top when the zipper is pulled up.
24. Clip and trim the seam allowance.
25. Turn the gown right side out and press the straps and neck edge.
26. Tuck the ends of each neck strap in and check the fit to the doll.
27. Sew the open end of the straps closed and mark the placement for a snap set.
28. Hand finish the gown lining to the zipper tap.
29. Sew the snap set onto the neck straps.

Wrap

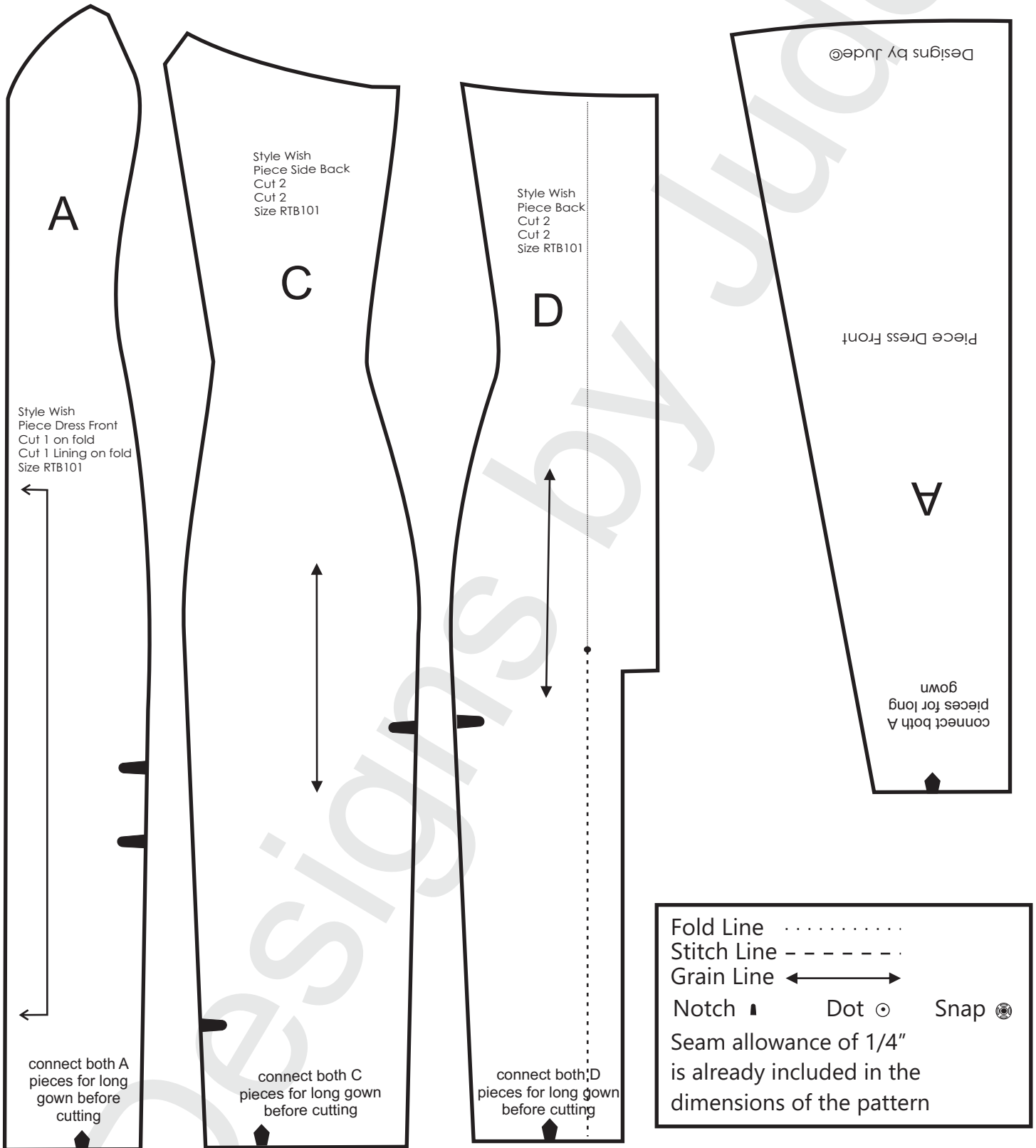
1. RST, sew wrap to wrap lining along outside raw edges.
2. Leave the area between notches open so the wrap can be turned right side out.
3. Grade seam allowance to 1/8" except for the open area between notches and turn wrap right side out.
4. Tuck in the area left unsewn for turning and hand finish.
5. Press lining side of wrap using a warm iron.

www.fletcherpatterncompany.com

A sewing tutorial for this pattern is on our Designs by Jude YouTube channel.

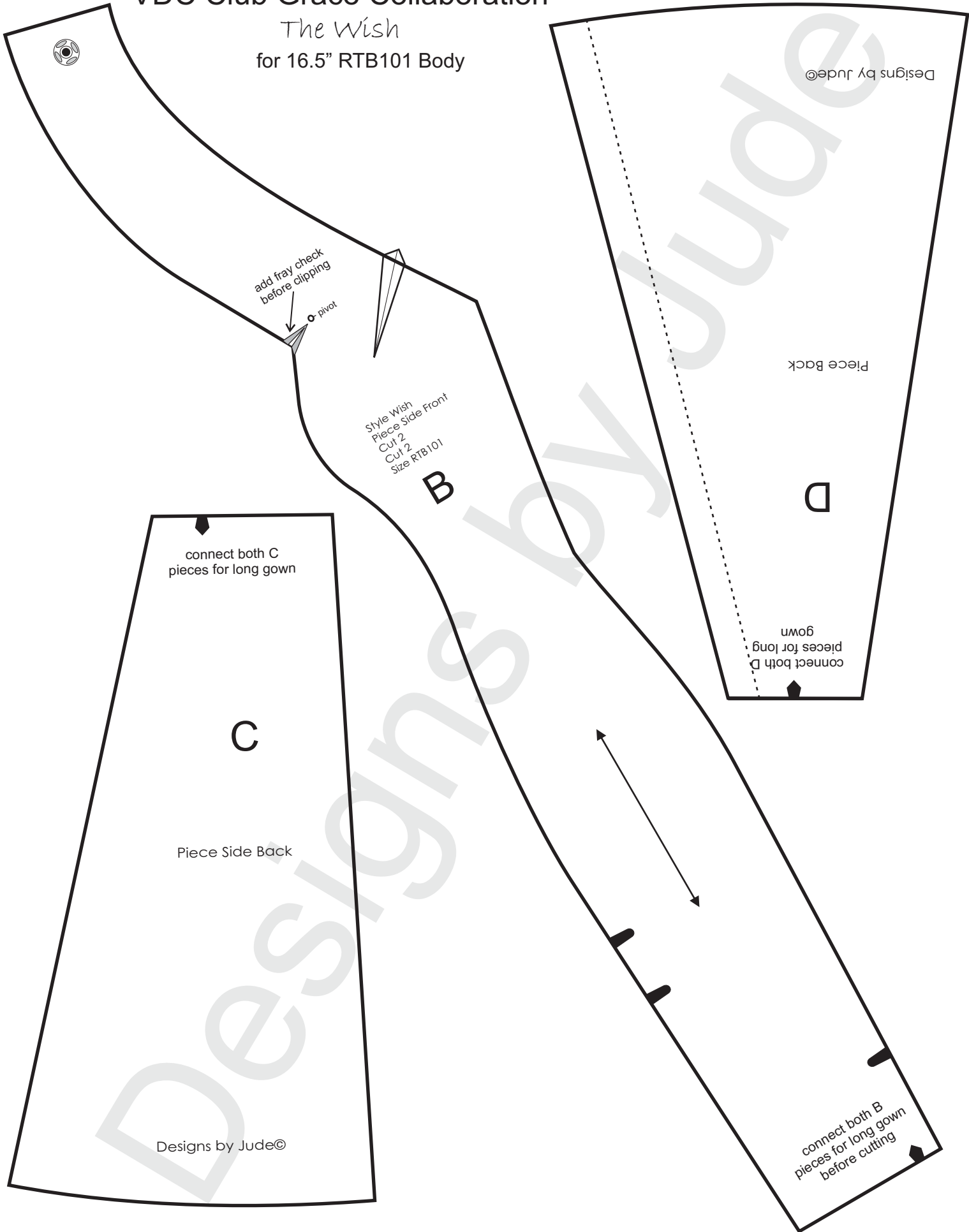
VDC Club Grace Collaboration

The Wish
for 16.5" RTB101 Body



VDC Club Grace Collaboration

The Wish
for 16.5" RTB101 Body



Designs by Jude©

Piece Back

D

connect both D pieces for long gown

Style Wish
Piece Side Front
Cut 2
Size RTB101

B

connect both C pieces for long gown

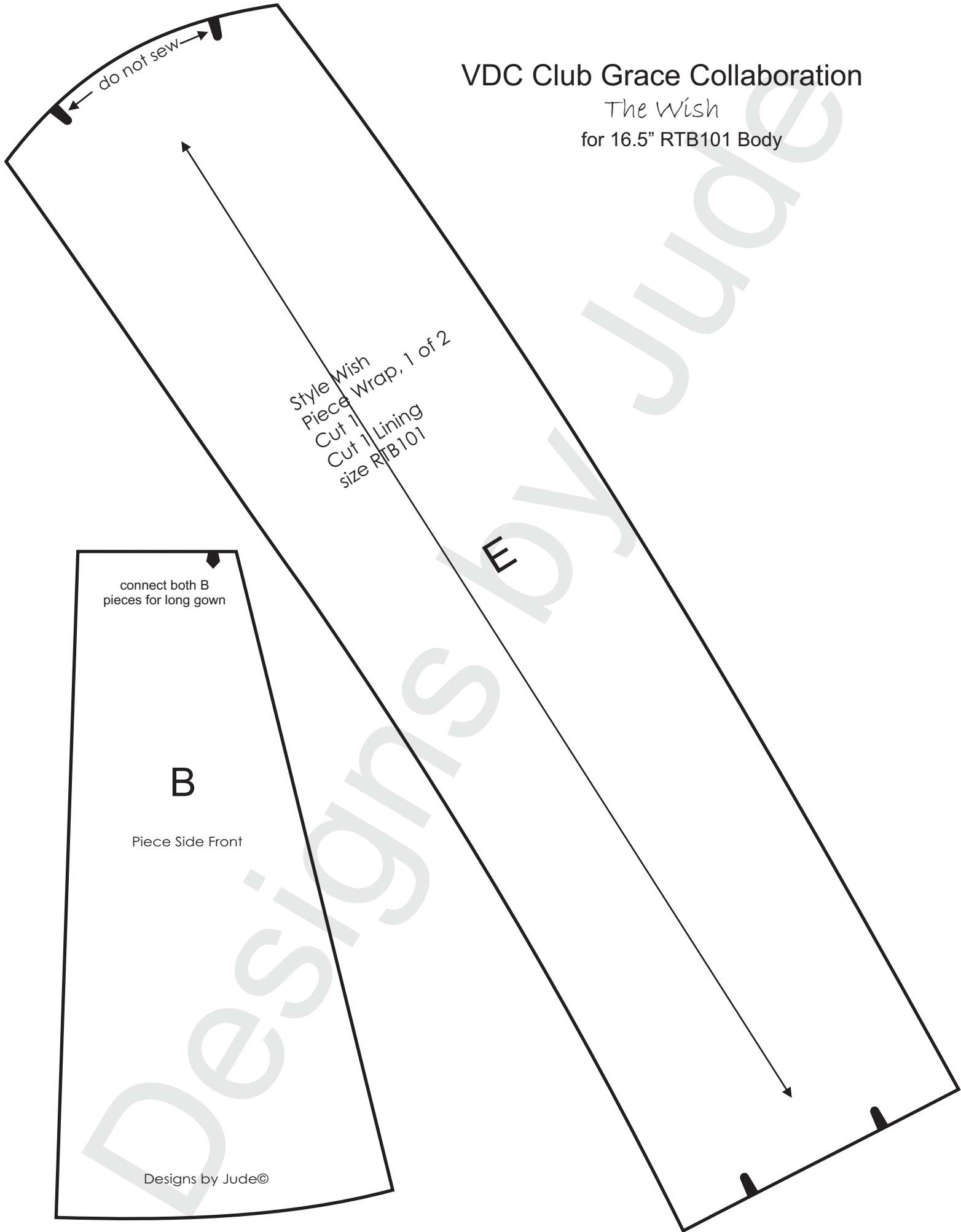
C

Piece Side Back

Designs by Jude©

connect both B pieces for long gown before cutting

VDC Club Grace Collaboration
The Wish
for 16.5" RTB101 Body



Style Wish
Piece Wrap, 1 of 2
Cut 1 |
Cut 1 | Lining
size RTB101

connect both B
pieces for long gown

B

Piece Side Front

Designs by Jude©

VDC Club Grace Collaboration
The Wish
for 16.5" RTB101 Body

Style Wish
Piece Wrap, 1 of 2
size RTB101

E

assemble wrap both E pattern pieces before cutting fabric