

A few notes about PDF patterns. . . .

This PDF pattern prints on regular letter size paper (8.5" x 11").

Patterns containing larger pieces will need to be taped together before cutting out the fabric.

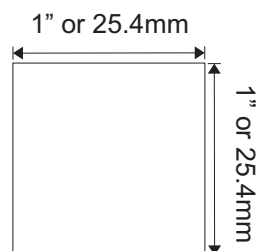
Be advised that this document needs to be printed to it's original scale. Please ensure that the printing options below are **not** selected.

**Do Not:** Rotate and Center, Fit to Page, Reduce to Fit or adjust the scale of this document.

Refer to the scale marker below to ensure that this copy is printed at the correct scale.

This PDF pattern is not licensed for commercial use and may not be shared, duplicated or distributed.

Designs by Jude, All RIGHTS RESERVED. Personal use only. Not licensed for commercial use.



# Designs by Jude

[www.fletcherpatterncompany.com](http://www.fletcherpatterncompany.com)



VDC Club Grace

*Land & Sea*

for 16.5" RTB101 Dolls

Designed by

*Tamara Casey*

\$12.95



2023 Designs by Jude, All RIGHTS RESERVED. Personal use only.

# VDC Club Grace Collaboration

## *Land and Sea*

For 16.5" RTB101 Grace Dolls

### **Basic Instructions**

You will get the most professional results by following a few recommendations.

- *Use a ¼" seam allowance unless noted otherwise on the pattern piece or instructions. This seam allowance is already included in the dimensions of the pattern.*
- *Press the garment as you work through each step. Press seams open where applicable.*
- *In un-lined garments, finish raw edges with an over-lock or zigzag stitch.*
- *Note that RST = Right Sides Together and WST = Wrong Sides Together.*

### **Fabric and Notions**

**Dress:** ½ yard Satin, 1 ½ yards of tulle, ¼ yard crush iridescent shimmer organza

**Lining:** ½ yard of poly, lightweight cotton, or silk essence

**Notions:** 4/0 snap sets, 1/8" trim for sleeves, fusible interfacing for the waistband, matching thread.

### **Over Dress**

1. Baste the overlay to the front bodice.
2. Sew bodice side front sections to bodice front section. Press seams open.
3. Sew the bodice side back sections to the bodice back sections. Press seams open.
4. Sew the bodice back sections to the bodice front at the shoulder seams. Press seams open.
5. Apply three strips of trim to each upper sleeve as shown on the pattern.
6. RST, pin the sleeve lining to the sleeves and sew the hem edge. Trim the seam and press.
7. Baste the sleeves and sleeve linings together.
8. Add trim to the sleeves at the hem edge.
9. Run a gathering stitch at each sleeve cap and along the sleeve edge.
10. Pull the gathers of the upper sleeve edge to match the lower sleeves. Pin in place and sew.
11. Pull gathers at the sleeve cap to fit the armhole openings,
12. With RST, pin the sleeves to the armhole openings and sew the sleeves in place.
13. RST, sew the back sections to the front at the side seams. Press the seams open.
14. Repeat steps 1-3 with the lining pieces.
15. Zigzag the raw edge of the armhole openings.
16. Sew the lining back sections to the front at the side seams. Press the seams open.
17. Turn the lining up ¼" and press.
18. RST, pin the lining to the bodice.
19. With the lining side up, sew across the neck edge and down the left back opening, stopping ¼" from the waist edge.
20. Check both sides, clip the seam allowance, and turn the bodice right sides out, Press.
21. Place the overlay on the overskirt pieces and then the lining. Sew the rounded edge.
22. Clip and trim the seam allowance and turn the overskirt pieces right sides out. Press.
23. Run a gathering stitch at the top of the overskirt pieces.
24. Gently pull the gathers to fit the bodice.
25. With RST, match each overskirt to the center of the bodice, pin in place while leaving ¼" of bodice past the finished edge of the overskirt on the back right side. Sew the skirt to the bodice.
26. Zigzag the raw edge of the bodice and bodice lining together at the right back opening.
27. With the underskirt on, fit the overdress onto your doll and mark the placement for the snaps.
28. Sew the snaps in place.

### **Skirt**

1. Sew the skirt side from pieces to the skirt front.
2. Sew the skirt side back pieces to the skirt back pieces.
3. Sew the skirt's front and back pieces together at the side seams.
4. Press all of the seams open.
5. Repeat the above steps with the skirt lining pieces.
6. RST, pin the skirt lining to the skirt and sew the hem edge.
7. Clip and trim the seam, then press the hem.

8. Zigzag the lining to the skirt at the left and right back openings.
9. Baste the lining to the skirt at the waist edge.
10. Cut two strips of tulle 48" x 12". Layer one on the other and run a gathering stitch at one long edge.
11. Pull the gathers of the tulle to fit the skirt's waist. Pin in place and sew two gathering stitches.
12. Turn up one long edge of the skirt waistband ¼" and press.
13. Pull the gathering stitches of the skirt to fit the waistband.
14. RST pin the waistband to the skirt and sew it in place. Press the seam allowance up.
15. Fold the left back opening in ¼" and then fold the waistband to the inside of the skirt.
16. Hand-finish the pressed edge of the waistband to the waist seam.
17. Zigzag the raw edge of the waistband at the right back opening.
18. Sew the center back seam of the skirt from the hem edge to the dot as indicated on the pattern.
19. Fit the skirt to the doll and mark the placement for the snap.
20. Sew the snap in place.

There is a sewing tutorial for this pattern on our Designs by Jude YouTube channel.  
[www.fletcherpatterncompany.com](http://www.fletcherpatterncompany.com)

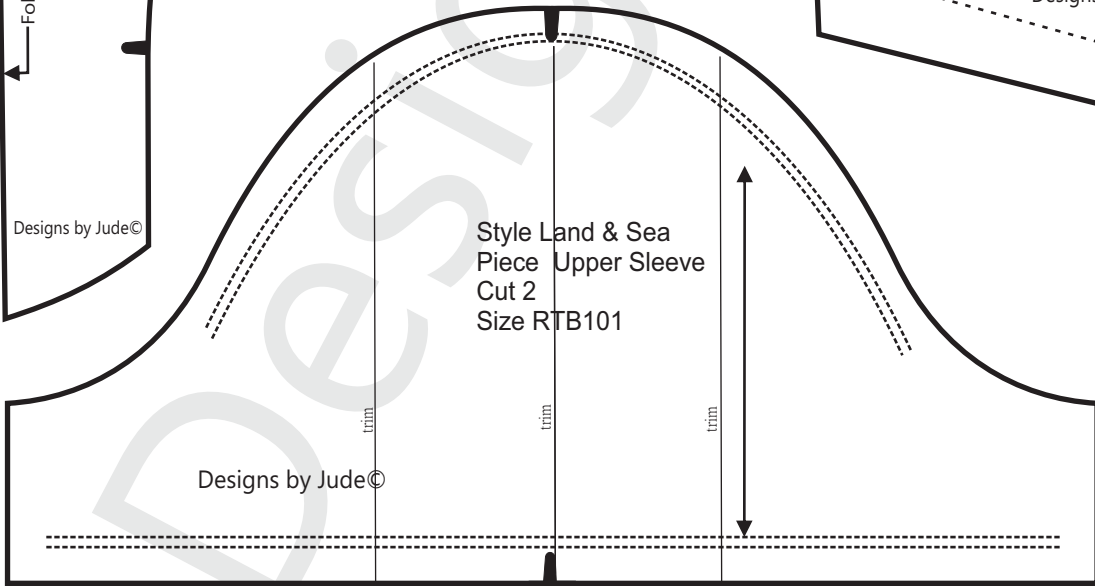
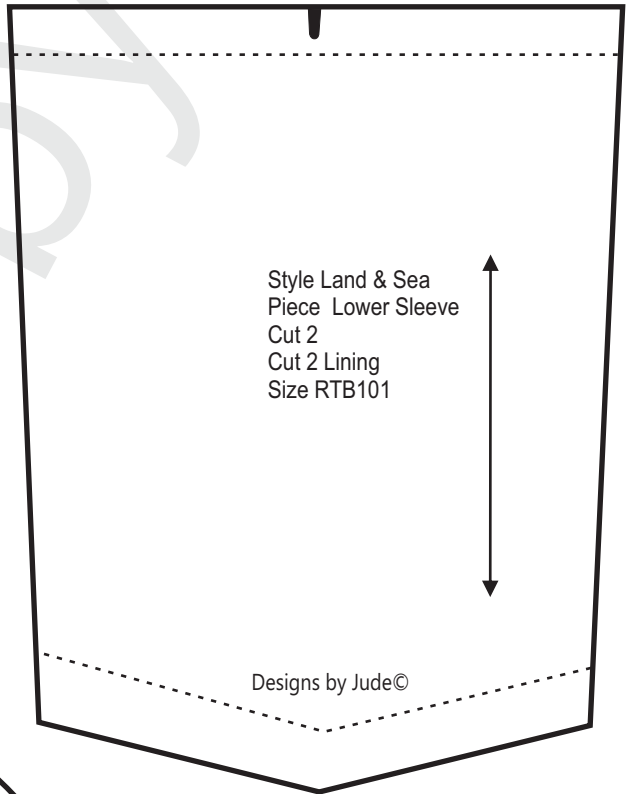
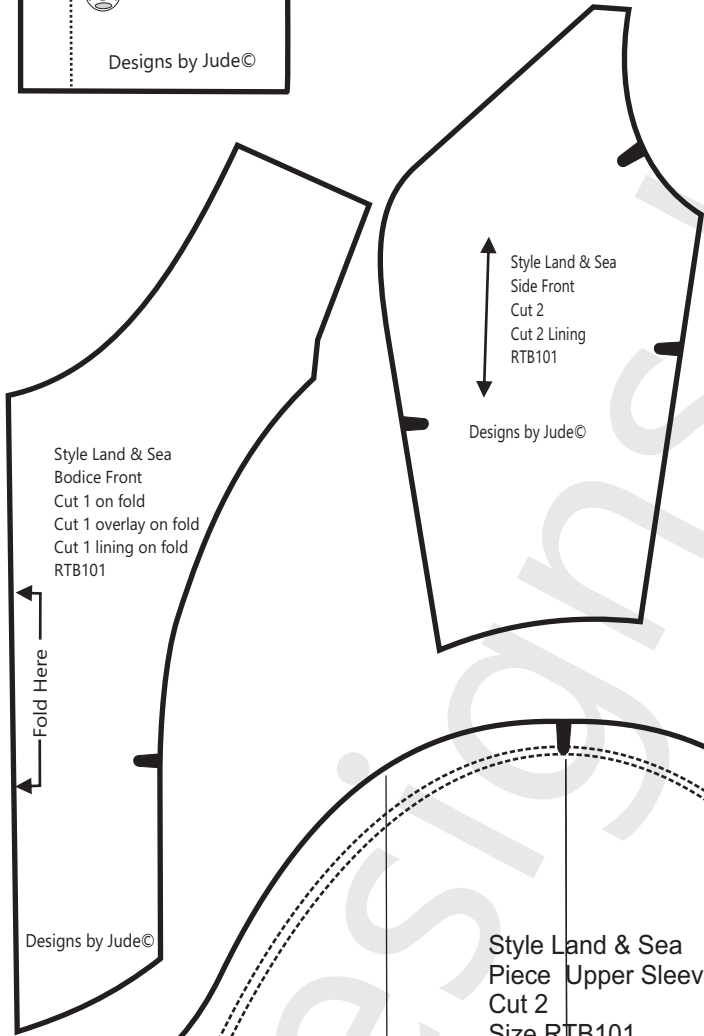
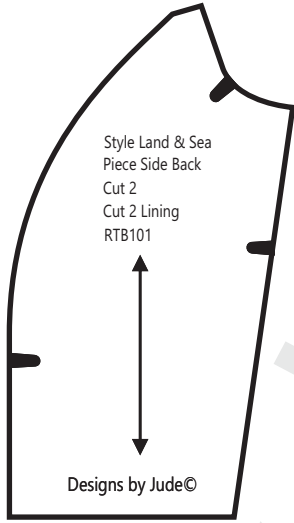
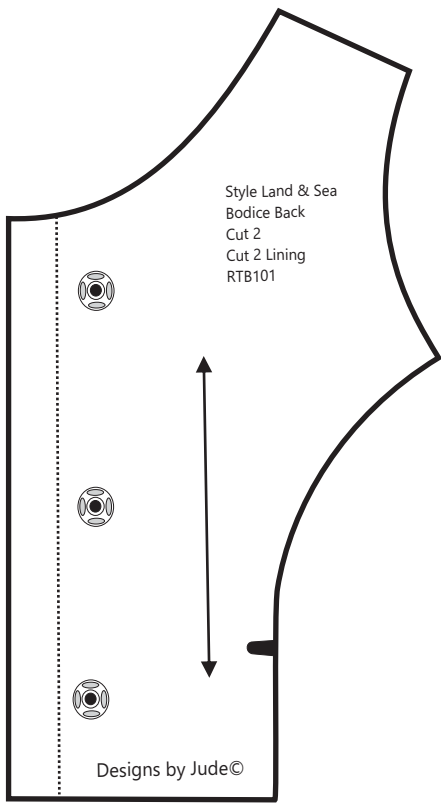
# VDC Club Grace

Land & Sea

for 16.5" RTB101 Grace

Fold Line .....  
Stitch Line - - - - -  
Grain Line ← →  
Notch ▲ Dot ● Snap ⊗

Seam allowance of 1/4"  
is already included in the  
dimensions of the pattern



# VDC Club Grace

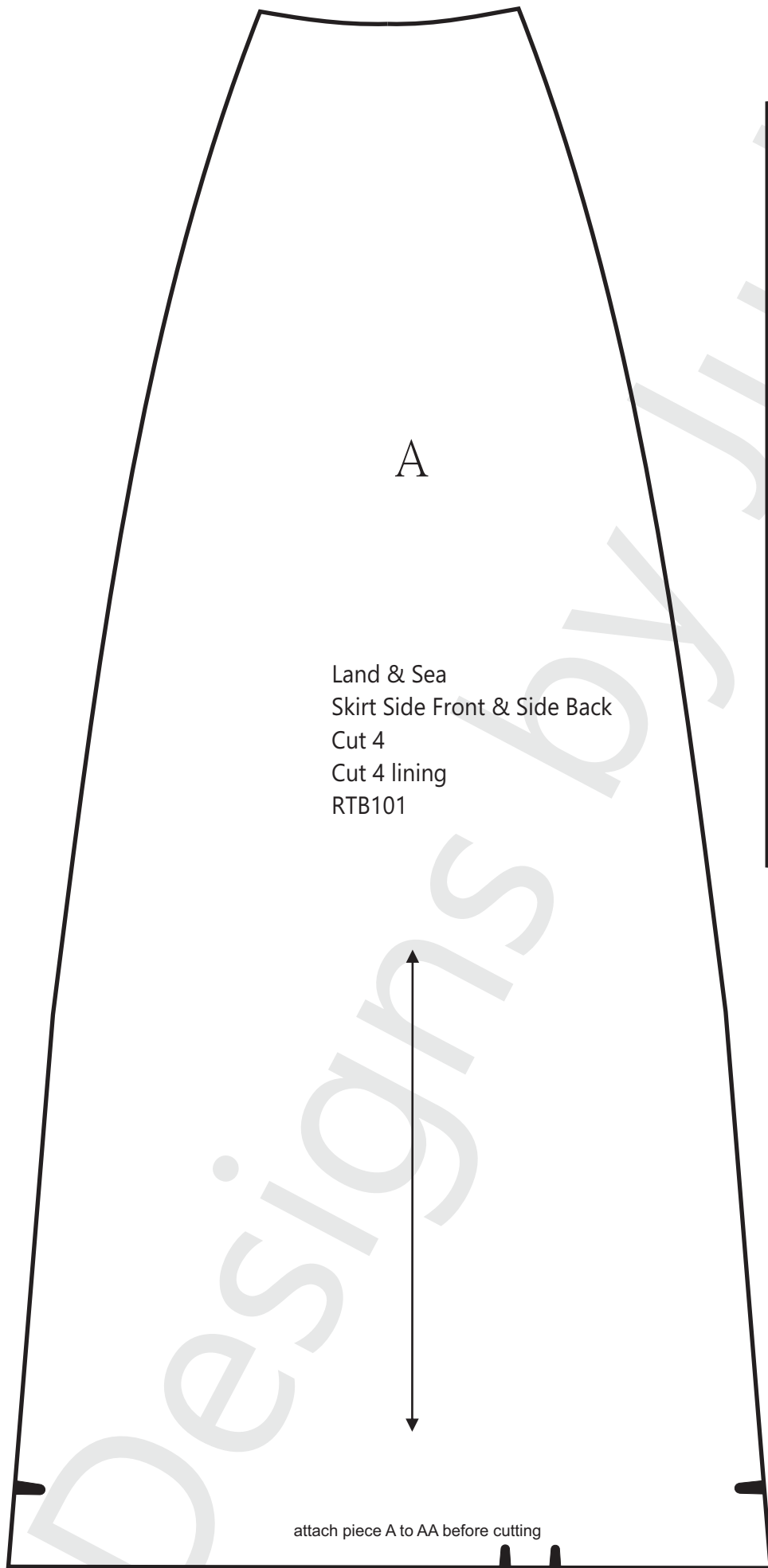
*Land & Sea*

for 16.5" RTB101 Grace

Land & Sea  
Overskirt  
Cut 2  
Cut 2 overlay  
Cut 2 lining  
RTB101



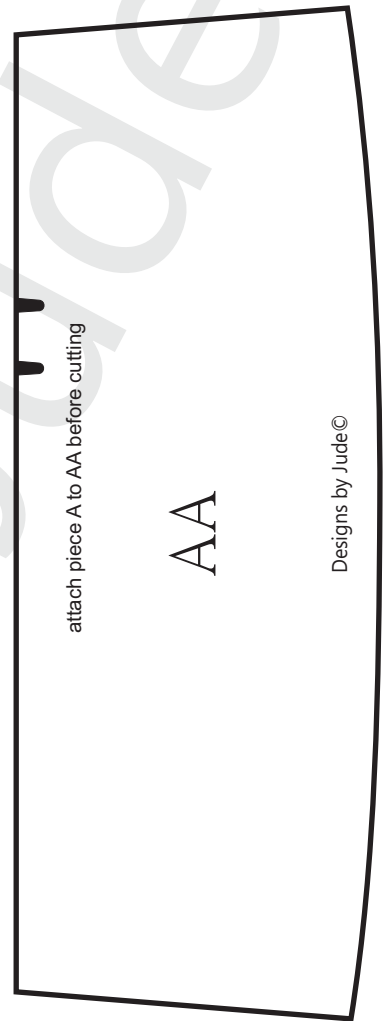
Designs by Jude©



A

Land & Sea  
Skirt Side Front & Side Back  
Cut 4  
Cut 4 lining  
RTB101

attach piece A to AA before cutting



attach piece A to AA before cutting

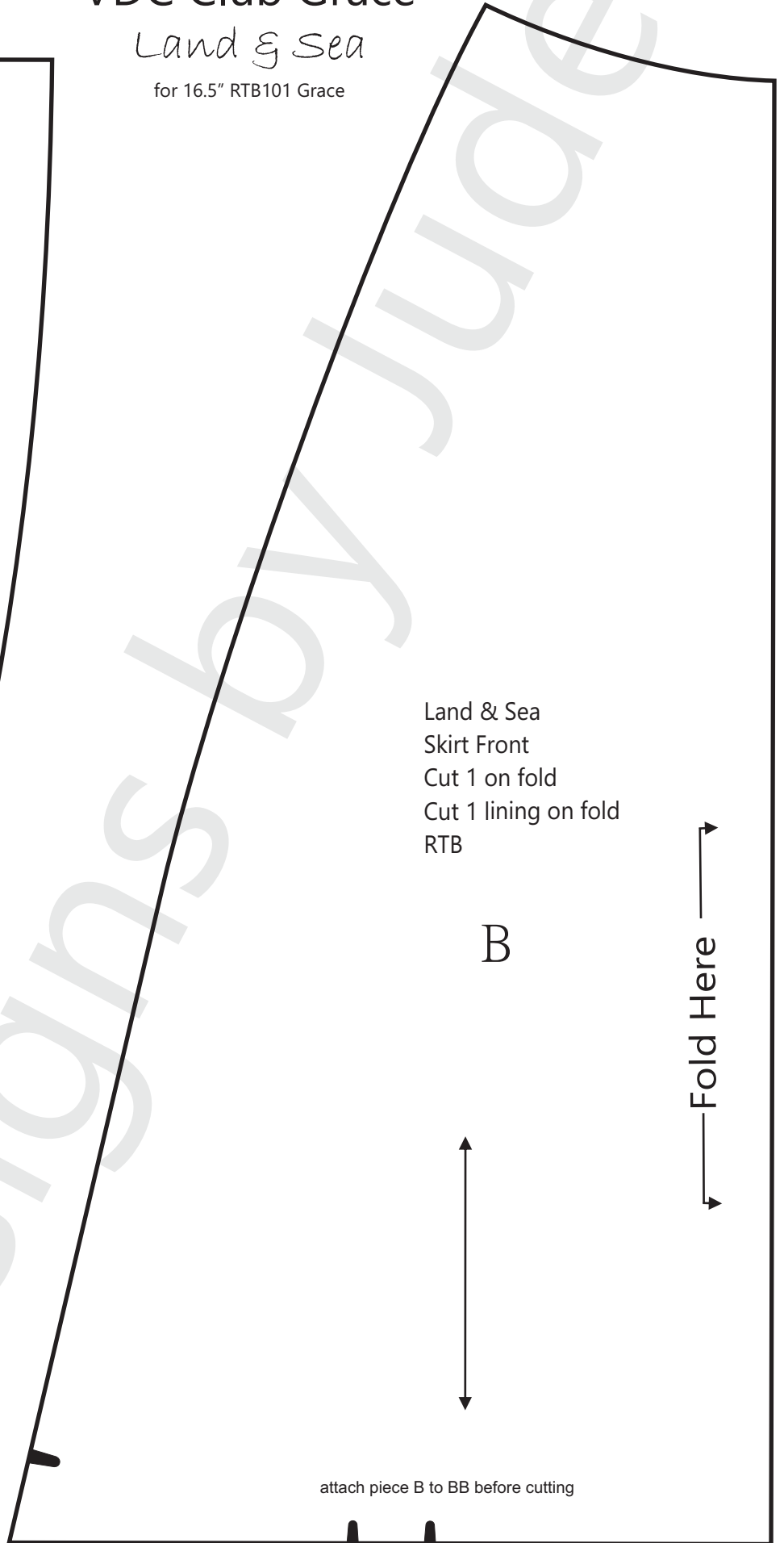
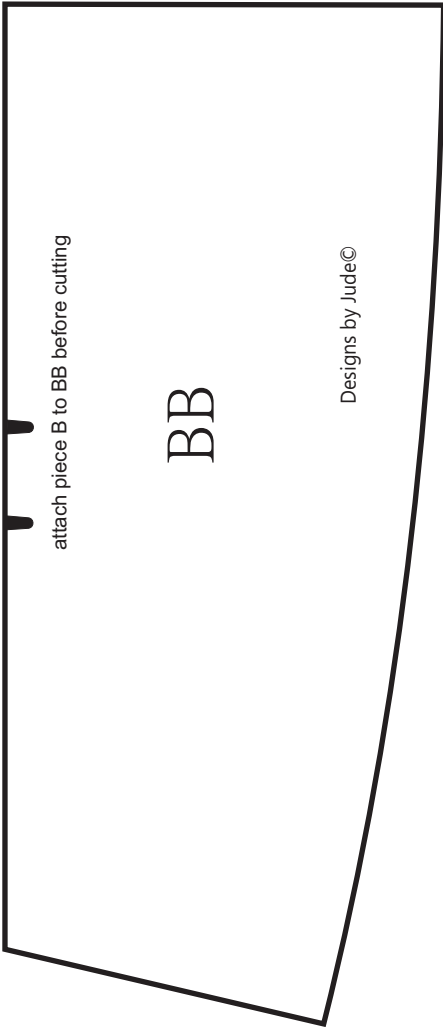
AA

Designs by Jude©

# VDC Club Grace

Land & Sea

for 16.5" RTB101 Grace

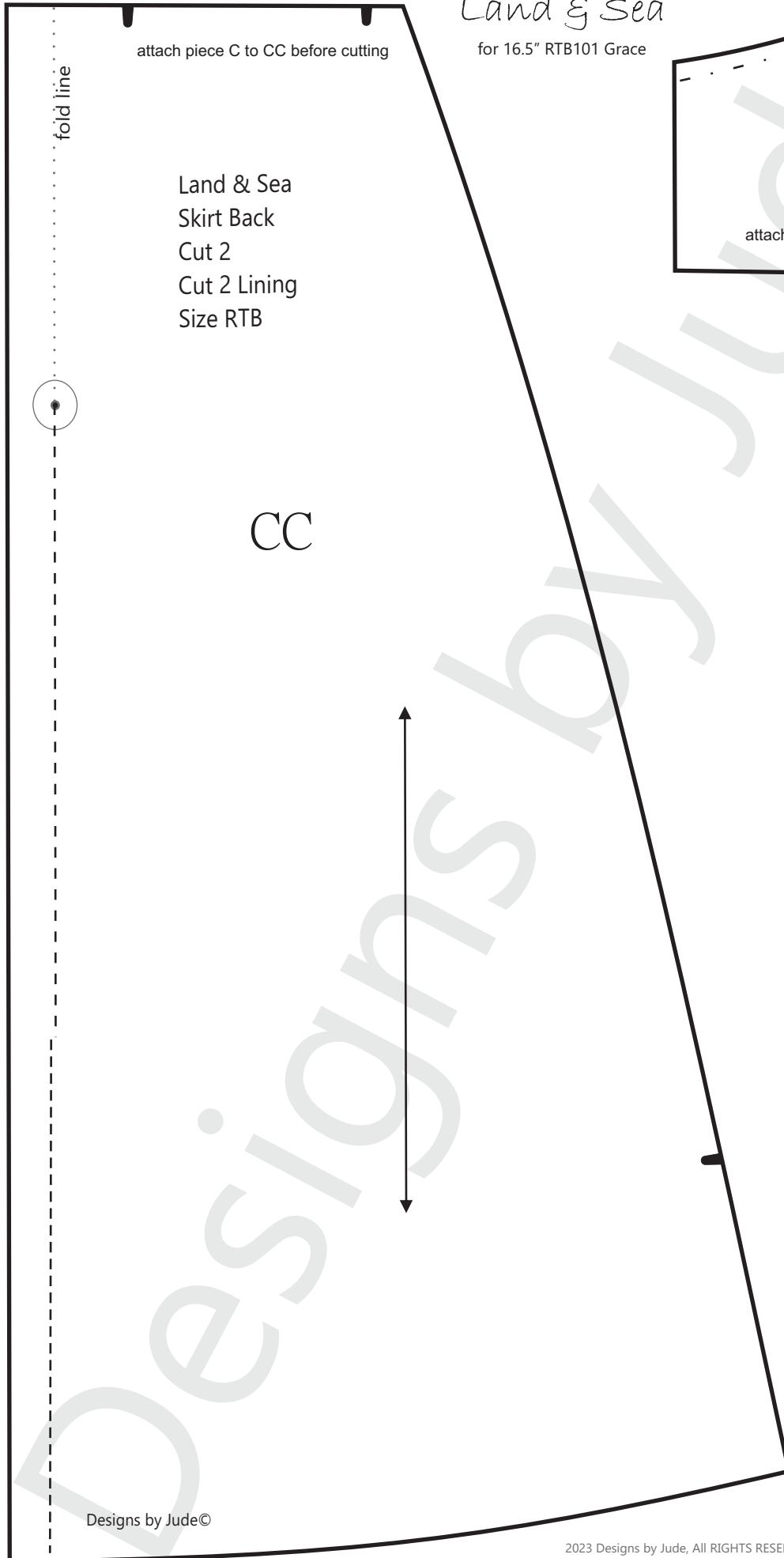




# VDC Club Grace

Land & Sea

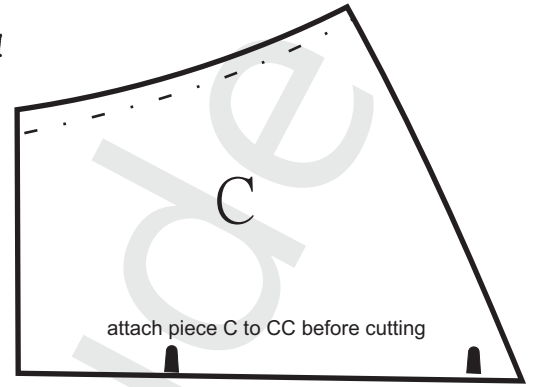
for 16.5" RTB101 Grace



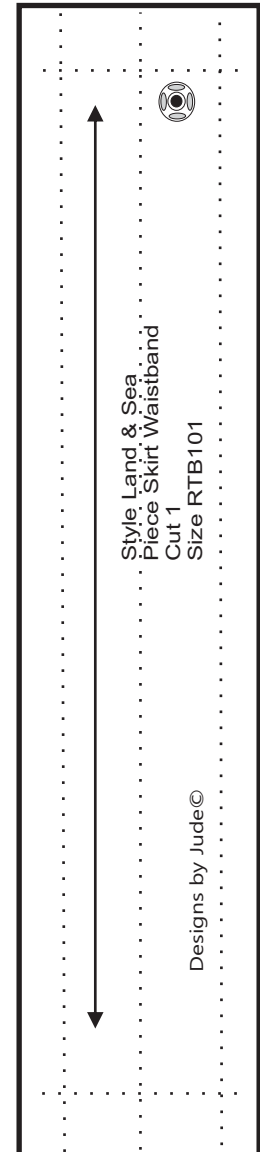
attach piece C to CC before cutting

Land & Sea  
Skirt Back  
Cut 2  
Cut 2 Lining  
Size RTB

CC



attach piece C to CC before cutting



Style Land & Sea  
Piece Skirt Waistband  
Cut 1  
Size RTB101

Designs by Jude©