

A few notes about PDF patterns. . . .

This PDF pattern prints on regular letter size paper (8.5" x 11").

Patterns containing larger pieces will need to be taped together before cutting out the fabric.

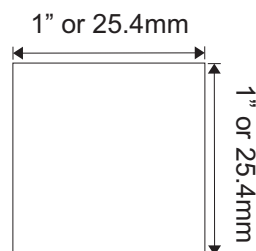
Be advised that this document needs to be printed to it's original scale. Please ensure that the printing options below are **not** selected.

**Do Not:** Rotate and Center, Fit to Page, Reduce to Fit or adjust the scale of this document.

Refer to the scale marker below to ensure that this copy is printed at the correct scale.

This PDF pattern is not licensed for commercial use and may not be shared, duplicated or distributed.

Designs by Jude, All RIGHTS RESERVED. Personal use only. Not licensed for commercial use.



# Designs by Jude

VDC Collaboration  
*Girl Power*  
for 16" Ellowyne Wilde Dolls



Designed by  
*Tamara Casey*



2024 Designs by Jude, All RIGHTS RESERVED. Personal use only.

# VDC Ellowyne Collaboration

## *Girl Power*

For 16" Ellowyne Wilde Dolls

### **Basic Instructions**

You will get the most professional results by following a few recommendations.

- *Use a ¼" seam allowance unless noted otherwise on the pattern piece or instructions. This seam allowance is already included in the dimensions of the pattern.*
- *Press the garment as you work through each step. Press seams open where applicable.*
- *In un-lined garments, finish raw edges with an over-lock or zigzag stitch.*
- *Note that RST = Right Sides Together and WST = Wrong Sides Together.*

### **Fabric and Notions**

#### **Pantsuit & Dress:**

cotton or similar woven material

#### **Notions:**

5" zipper, single-sided fusible interfacing for pockets, matching thread, doll buckle, tiny buttons

#### **Pantsuit**

1. Sew the darts in the front bodice. Press to the side.
2. Sew the darts in the back bodice. Press the darts to the side.
3. Right sides together, sew the center back seam of the bodice. Press the seam open.
4. Sew the darts in the pant front pieces. Press the darts to the side.
5. Sew the darts in the pant back pieces. Press the darts to the side.
6. With the right sides together, sew the center back crotch seam of the pants.
7. Clip the seam and press the seam open.
8. RST, pin the bodice back to the pants back matching the darts, and sew them together.
9. Press the seam open.
10. RST, pin the front bodice pieces to the front pants pieces matching the darts and sew them together.
11. Press the seams open.
12. RST, sew the front pieces together at the center front crotch seam from the raw edge to the dot as indicated on the pattern.
13. Clip in toward the seam allowance and press the seam open.
14. Pin the zipper to the front opening and hand sew or machine stitch in place. RST, sew the pantsuit front and back sections together at the shoulders. Press the seams open.
15. Turn the sleeves up ¼" and press. Topstitch.
16. Run a gathering stitch between dots on both sleeve caps.
17. Pull the gathering stitch gently to help ease the sleeves into the armhole openings.
18. Pin sleeves to the pantsuit and sew in place.
19. Clip and trim seam allowance.
20. RST, pin the front to the back and sew the side seams.
21. Clip & trim the seam allowance and press the seams open.
22. Hem both pants legs of the pantsuit.
23. RST, pin the pant legs together at the inseam matching the crotch seam.
24. Sew the inseam from hem to hem.
25. Clip the seam and press the seam allowance open.
26. Turn the pantsuit right side out and fit it to your doll.
27. RST, pin the collar pieces and sew them together leaving the neck edge unsewn.
28. Clip and trim the seam allowance, then turn the collar right side out and press.
29. Take some clips into the neck edge of the collar.
30. Pin the collar to the pantsuit neck matching the finished edge of the collar with the finished edge of the front openings.
31. Baste the collar in place.
32. RST, sew the facing pieces at the neck seam. Press the seam open.
33. Zigzag or serge the inner raw edge of the facing.
34. RST, matching the center back seams, pin the facing to the pantsuit. The straight edge of the facing will extend past the pantsuit at each side. Fold the extra facing to the inside of the pantsuit and pin it in place. (this will enclose the zipper teeth on each side).
35. Sew the collar in place.
36. Clip and trim the seam allowance.
37. Press the facing to the inside. Press the straight edges of the facing under ¼" and press, then pin it to the zipper tape.
38. Hand finish the facing to the zipper tape.
39. Fuse interfacing to pockets, then fold edges in ¼" on each side and press.

40. Topstitch around the pockets.
41. Fold the upper edge of the pocket down ¼" and press.
42. Position pockets on the pantsuit and hand stitch in place.
43. Add a decorative button to each pocket.

### Zipper Front Dress

1. Sew the darts in the front bodice. Press to the side.
2. Sew the darts in the back bodice. Press the darts to the side.
3. Right sides together, sew the center back seam of the bodice. Press the seam open.
4. Sew the darts in the skirt front pieces. Press the darts to the side.
5. Sew the darts in the skirt back pieces. Press the darts to the side.
6. With the right sides together, sew the center back seam of the skirt.
7. Clip the seam and press the seam open.
8. Pin the bodice back to the skirt back matching the darts and sew them together.
9. Press the seam open.
10. RST, pin the front bodice pieces to the front skirt pieces matching the darts and sew them together.
11. Press the seams open.
12. RST, sew the front pieces together at the center front seam from the hem to the dot as indicated on the pattern.
13. Clip in toward the seam allowance and press the seam open.
14. Pin the zipper to the front opening and hand sew or machine stitch in place.
15. RST, sew the dress front and back sections together at the shoulders. Press the seams open.
16. Turn the sleeves up ¼" and press. Topstitch.
17. Run a gathering stitch between dots on both sleeve caps.
18. Pull the gathering stitch gently to help ease the sleeves into the armhole openings.
19. Pin sleeves to the dress and sew in place.
20. Clip and trim seam allowance.
21. RST, pin the front to the back and sew the side seams.
22. Clip & trim the seam allowance and press the seams open.
23. Hem the dress.
24. Turn the dress right side out and fit it to your doll.
25. RST, pin the collar pieces and sew them together leaving the neck edge unsewn.
26. Clip and trim the seam allowance, then turn the collar right side out and press.
27. Take some clips into the neck edge of the collar.
28. Pin the collar to the dress matching the finished edge of the collar to the finished edge of the front openings.
29. Baste the collar in place.
30. RST, sew the facing pieces together at the neck seam. Press the seam open.
31. Zigzag or serge the inner raw edge of the facing.
32. RST, matching the center back seams, pin the facing to the dress. The straight edge of the facing will extend past the pantsuit at each side. Fold the extra facing to the inside of the pantsuit and pin it in place. (this will enclose the zipper teeth on each side).
33. Sew the collar in place. Clip and trim the seam allowance.
34. Press the facing to the inside. Press the straight edges of the facing under ¼" and then pin it to the zipper tape.
35. Hand finish the facing to the zipper tape.
36. Fuse interfacing to pockets, then fold edges in ¼" on each side and press.
37. Topstitch around the pockets.
38. Fold the upper edge of the pocket down ¼" and press.
39. Position pockets on the pantsuit and hand stitch in place.
40. Add a decorative button to each pocket.

### Belt

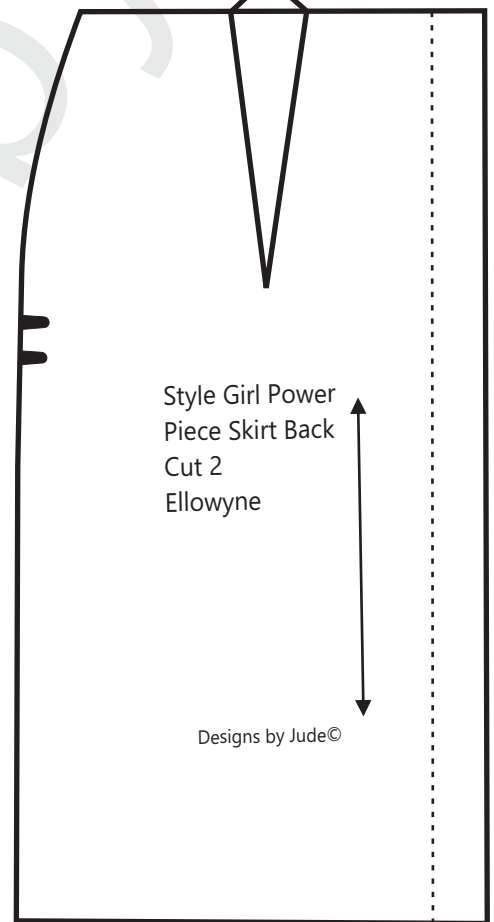
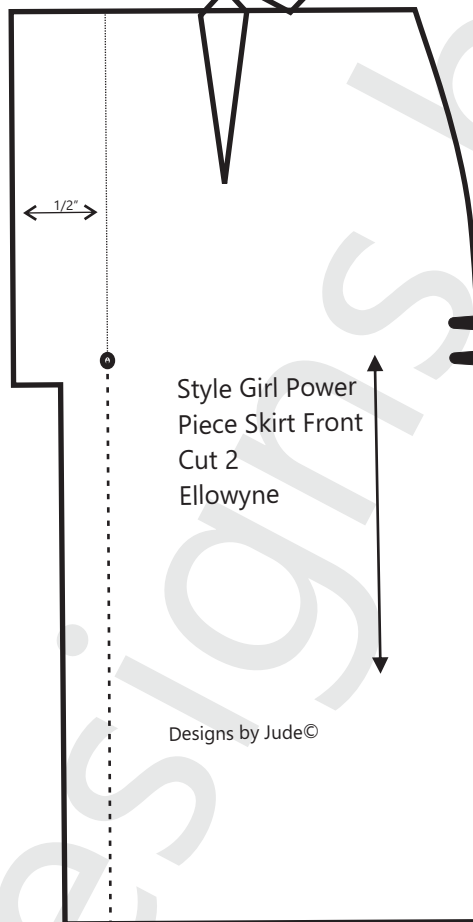
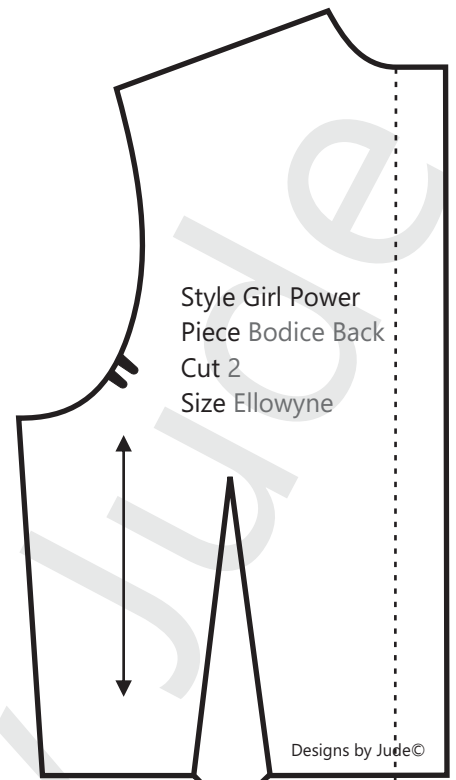
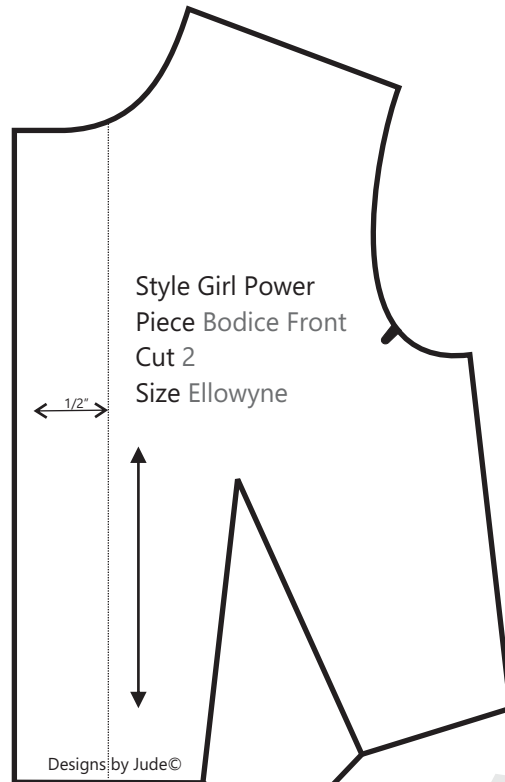
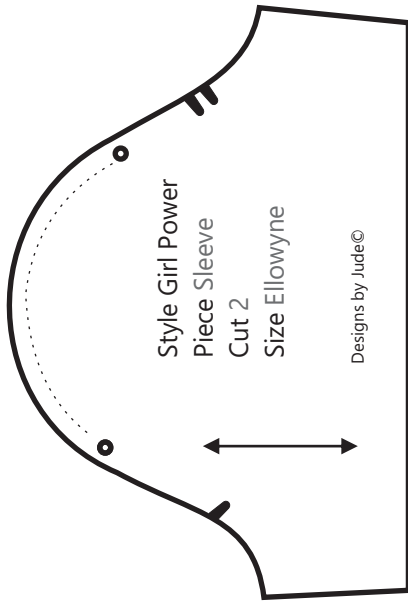
1. RST, sew along both long edges and one short end of the belt pieces, rounding as you turn.
2. Clip and trim the seam allowance.
3. Turn the belt right side out and press.
4. Topstitch near the edge of the belt if desired.
5. Pull the belt through the doll buckle.
6. Fit it to the doll with the pantsuit on to note length.
7. Trim excess, then fold the raw edge over the buckle bar and stitch in place.
8. Add a dab of fray check to the raw edge to prevent fraying.

There is a sewing tutorial for this pattern on our Designs by Jude YouTube channel.  
[www.fletcherpatterncompany.com](http://www.fletcherpatterncompany.com)

# VDC Collaboration

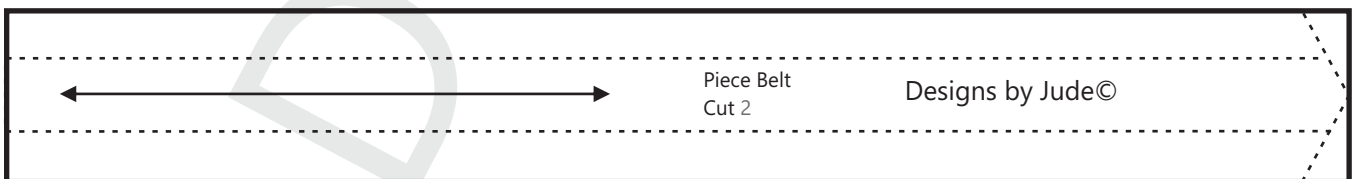
*Girl Power*

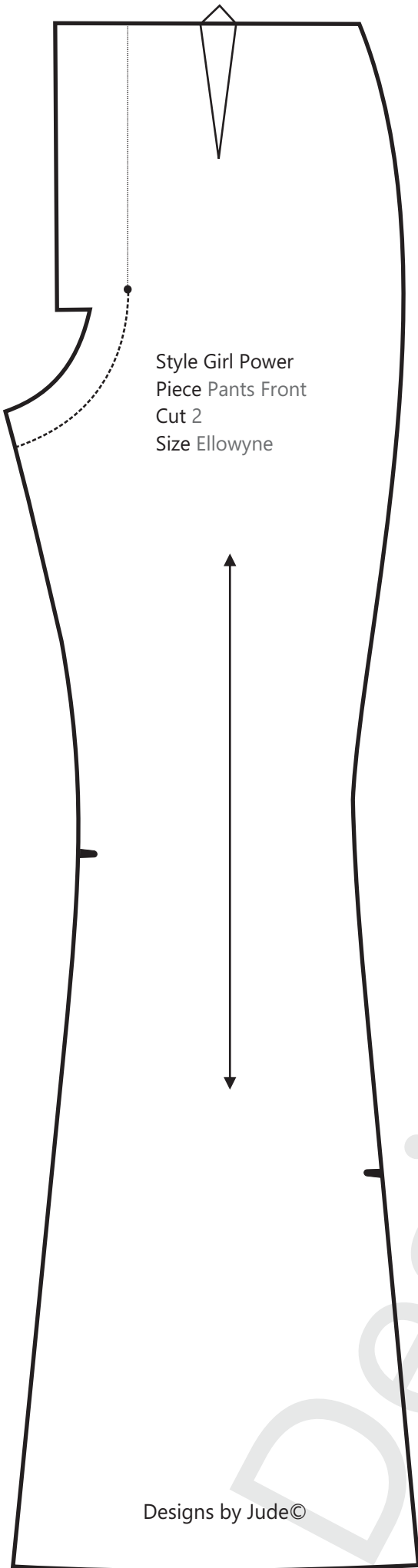
for 16" Ellowyne Wilde



Fold Line .....  
 Stitch Line - - - - -  
 Grain Line <- - - - ->  
 Notch ■ Dot ● Snap ☉

Seam allowance of 1/4" is already included in the dimensions of the pattern





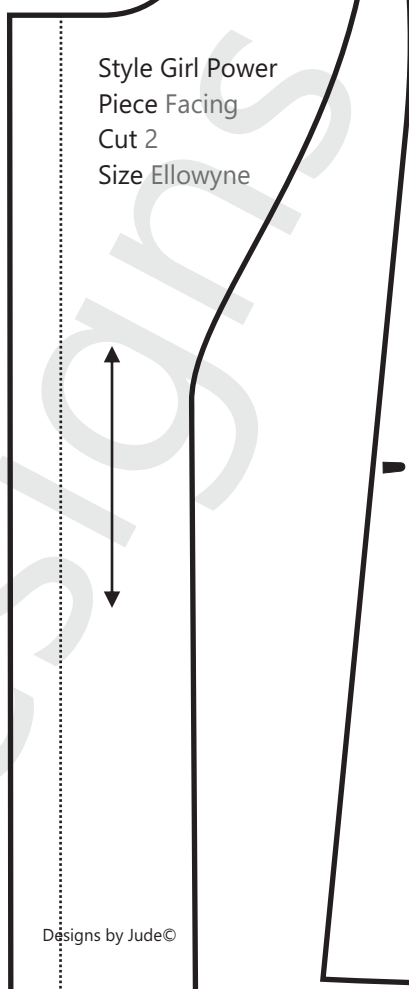
Style Girl Power  
Piece Pants Front  
Cut 2  
Size Ellowyne

Designs by Jude©



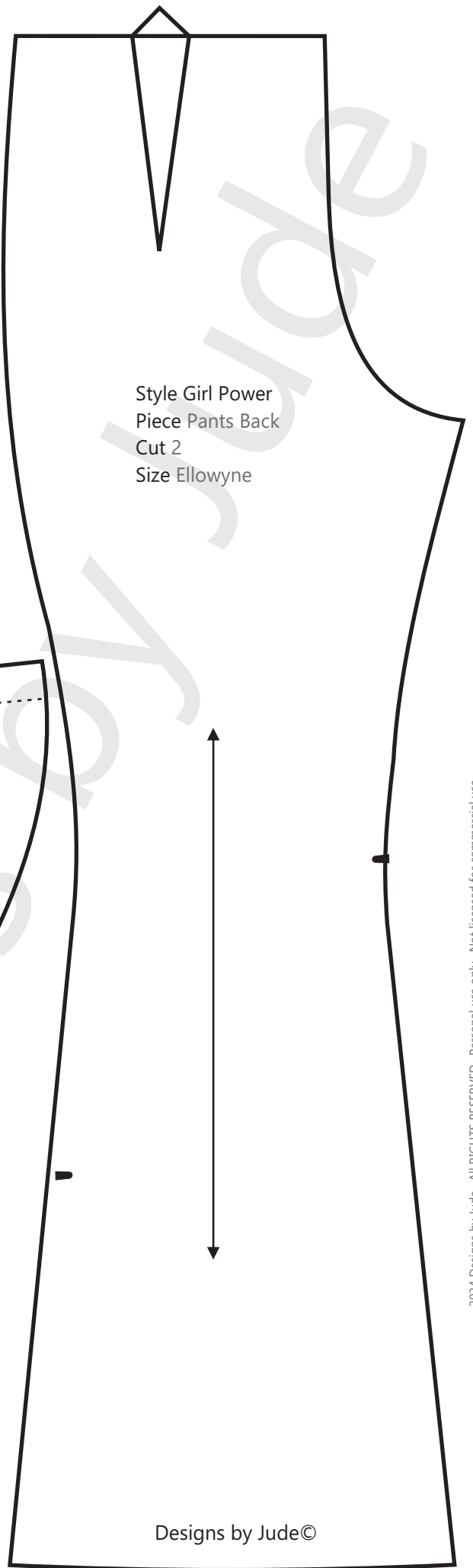
Style Girl Power  
Piece Collar  
Cut 2  
Size Ellowyne

Designs by Jude©



Style Girl Power  
Piece Facing  
Cut 2  
Size Ellowyne

Designs by Jude©



Style Girl Power  
Piece Pants Back  
Cut 2  
Size Ellowyne

Designs by Jude©