

A few notes about PDF patterns from Designs by Jude. . . .

This PDF pattern requires legal size paper (8.5" x 14") or A4 size paper (8.27" x 11.69", 210mm x 297mm). It will **not** print on standard letter.

Patterns containing larger pieces will need to be taped together before cutting out the fabric.

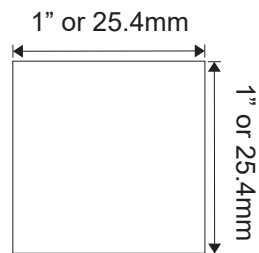
Be advised that this document needs to be printed to it's original scale. Please ensure that the printing options below are **not** selected.

**Do Not:** Rotate and Center, Fit to Page, Reduce to Fit or adjust the scale of this document.

Refer to the scale marker below to ensure that this copy is printed at the correct scale.

This PDF pattern is not licensed for commercial use and may not be shared, duplicated or distributed.

Designs by Jude, All RIGHTS RESERVED. Personal use only. Not licensed for commercial use.



# Designs by Jude

www.fletcherpatterncompany.com



VDC Club Grace  
Equestrian  
for 16.5" RTB101 Dolls



Designed by  
*Tamara Casey*

\$12.95



# VDC Collaboration

*Equestrian*

For 16.5" RTB101

**Basic Instructions:** You will get the most professional results by following a few recommendations.

- Use a ¼" seam allowance unless noted otherwise on the pattern piece or instructions.
- This seam allowance is already included in the dimensions of the pattern.
- Press the garment as you work through each step. Press seams open where applicable.
- In un-lined garments, finish raw edges with an over-lock or zigzag stitch.
- Note that RST = Right Sides Together and WST = Wrong Sides Together.

## Fabric and Notions

Coat:	lightweight wool, wool blends
Breeches:	cotton blend with a little stretch (3% spandex)
Top:	t-shirt knit
Neck Scarf:	remnant of poly or silk
Lining:	poly, lightweight cotton, silk essence
Notions:	matching thread, snap sets, small buttons

## High Neck Top

1. With the right sides together sew back sections to the front at the shoulder seams.
2. Turn the neck edge down ¼" and topstitch.
3. Turn the armhole edges under ¼" and topstitch.
4. RST, sew the back sections to the front at the side seams.
5. Turn the hem edge up ¼" and topstitch.
6. Sew the center back seam from the hem to the dot as indicated on the pattern.
7. Fit to the doll.
8. Fold the left back opening under ¼" and mark placement for the snaps.
9. Sew the snaps in place.

## Breeches

1. RST, sew waistband front sections to breeches front sections. Press the seam up.
2. Zigzag or serge the raw edge of the left and right front opening.
3. Take some small clips into the curved edges of the pants and the grip pieces.
4. RST, sew the grips to the pants' back sections. Press the seam allowance to the center.
5. Topstitch along the grips.
6. RST, sew the grips to the pants' front sections. Press seam allowance to the center.
7. Topstitch along the grips.
8. Press the hem of both pant legs up ¼". Topstitch the hem.
9. RST, pin the crotch seam from the front to the back.
10. Starting at the back sew the seam to the dot as indicated on the pattern. Reinforce at the dot.
11. Clip the crotch seam and press it open.
12. RST, pin the back waistband to the pants back and sew it in place. Press the seam up.
13. RST, pin the pants together at the side seam. Sew each side seams.
14. Clip the seams, press, and turn the pants right side out.
15. Sew the front waistband lining sections to the back at the side seams. Press the seams open.
16. Zigzag the lower raw edge of the waistband.
17. RST, pin the waistband lining to the waistband and sew across the top.
18. Turn the left opening under ¼" and fold the waistband lining to the inside. Press.
19. Topstitch the waistband.
20. Fit the pants to the doll and mark the placement for snaps.
21. Sew the snaps in place.
22. Add a decorative button.

## Coat

1. Sew the darts in the coat front. Press the darts.
2. RST, sew the coat side back sections to the coat back. Press the seams open.

3. Sew the coat front sections to the coat back at the shoulder seam. Press the seams open.
4. Staystitch the neck opening.
5. Turn up the hem edge of the sleeves ¼” and press.
6. Run a gathering stitch between the dots on each sleeve cap.
7. Pull the gather gently to help ease the sleeves into the armhole openings.
8. RST, pin the sleeves to the armholes and sew them in place.
9. RST, fold the collar in half and sew each end. Trim the seam allowance, turn and press,
10. Pin the collar to the coat. (match the center of the collar to the center back of the coat).
11. Baste the collar in place.
12. With the right sides together, sew the coat's front sections to the back at the side seams.
13. Clip into the seam allowance and press the seams open.
14. Turn the coat right side out.
15. Check the fit to the doll.
16. RST, pin the coat facing to the coat front lining. Press the seams to the center.
17. Sew the darts in the coat's front lining.
18. Sew the lining side back sections to the lining back. Press the seams open.
19. Sew the lining front sections to the lining back at the shoulder seams. Press the seams open.
20. Turn the hem edge of each sleeve lining piece up ¼” and press.
21. Run a gathering stitch between the dots on each sleeve lining piece.
22. Pull the gather gently to help ease the sleeve into the armhole opening.
23. Pin the sleeve lining pieces to the coat lining at the armholes. Sew in place.
24. RST, sew the coat's front lining and back lining together at the side seams. Press the seams open.
25. With the right sides together, pin the lining to the coat.
26. Starting at the center back, sew all the way around the coat leaving an opening in the back to turn.
27. Check both sides, clip and trim the seam allowance, and turn the coat right side out.
28. Press the coat with the opening used to turn the coat folded in.
29. Hand finish the opening closed and the sleeve lining to the sleeves.
30. RST, sew the pocket lining to the pockets. Clip seam allowance turn and press.
31. Zigzag the raw edges of the pocket closed.
32. Fold the top edge of each pocket down and press.
33. Fit the coat to the doll. Mark placement for the pockets and snaps.
34. Hand-sew the pockets in place.
35. Sew on the snaps.
36. Add decorative buttons.

### **Neck Scarf**

1. RST, sew all the way around the scarf pieces leaving a small opening to turn.
2. Trim seam allowance.
3. Turn the scarf right side out and press.
4. Hand finish the opening used to turn the scarf.

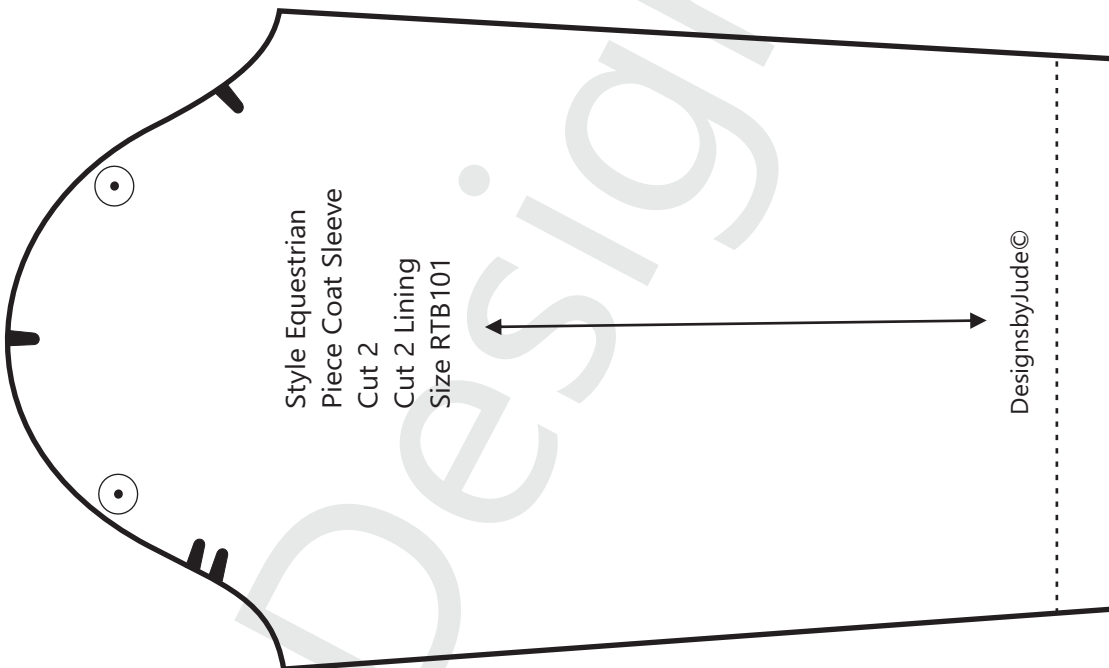
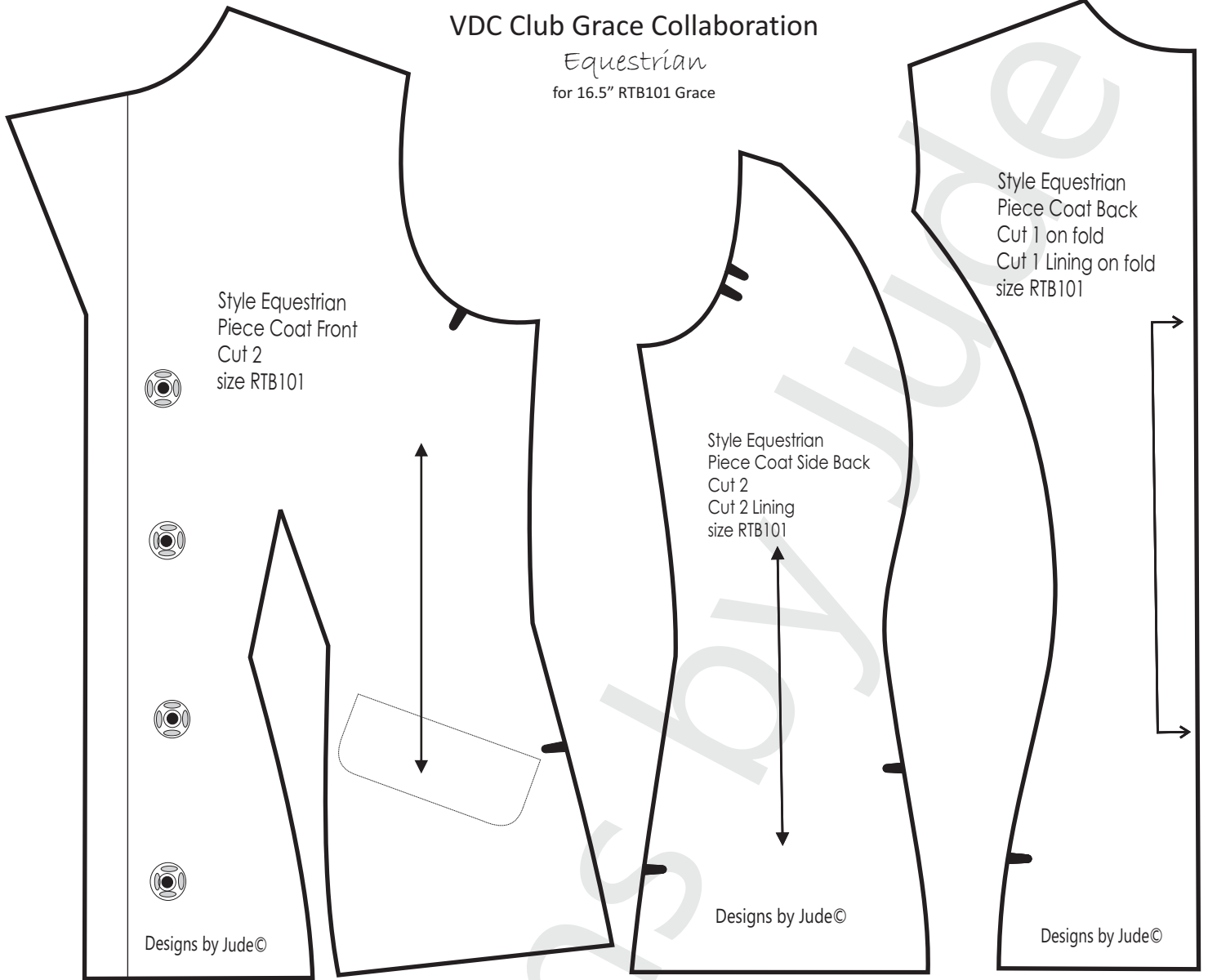
[www.fletcherpatterncompany.com](http://www.fletcherpatterncompany.com)

\* There are sewing tutorials for this pattern on our Designs by Jude YouTube channel. \*

VDC Club Grace Collaboration

Equestrian

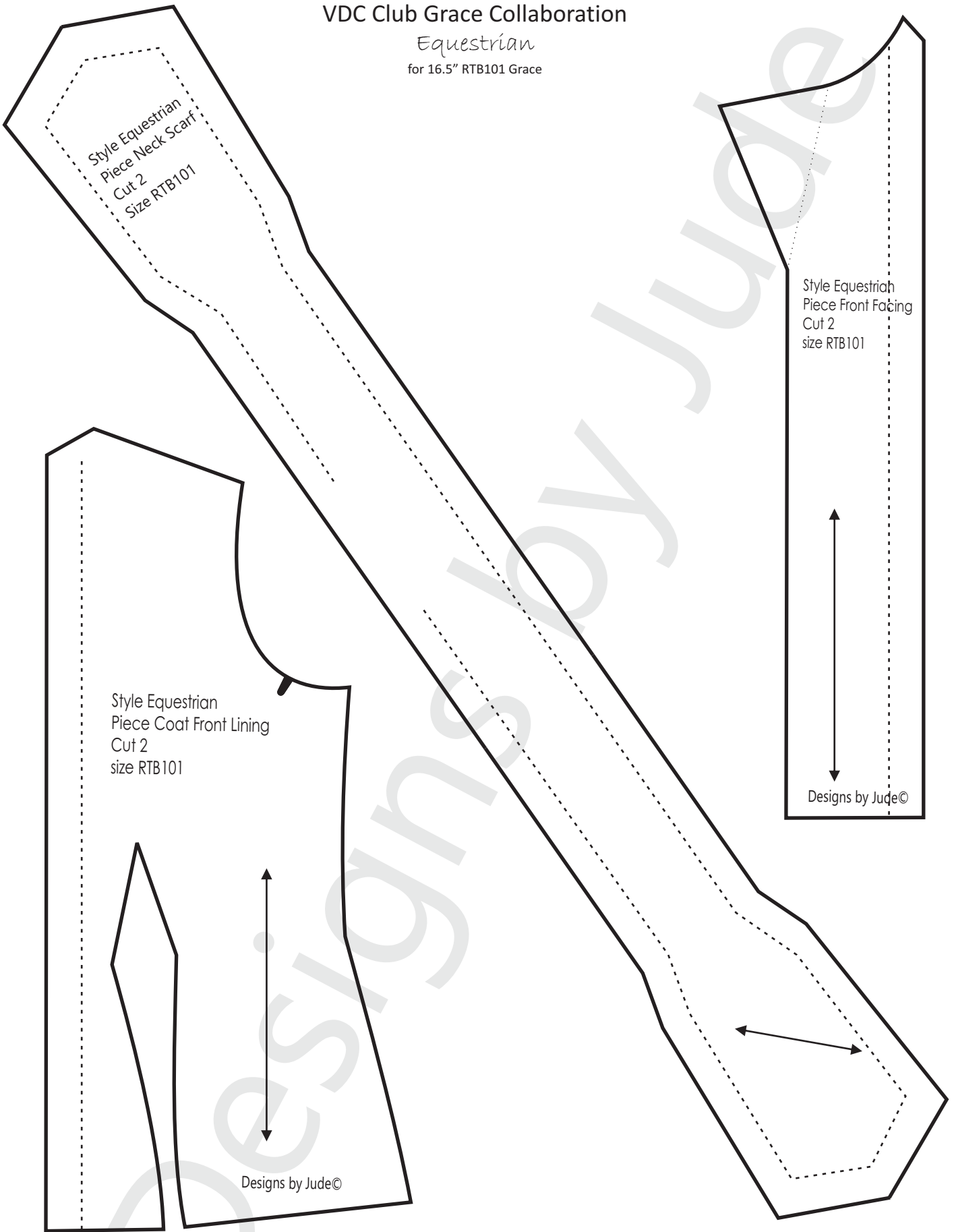
for 16.5" RTB101 Grace



VDC Club Grace Collaboration

*Equestrian*

for 16.5" RTB101 Grace



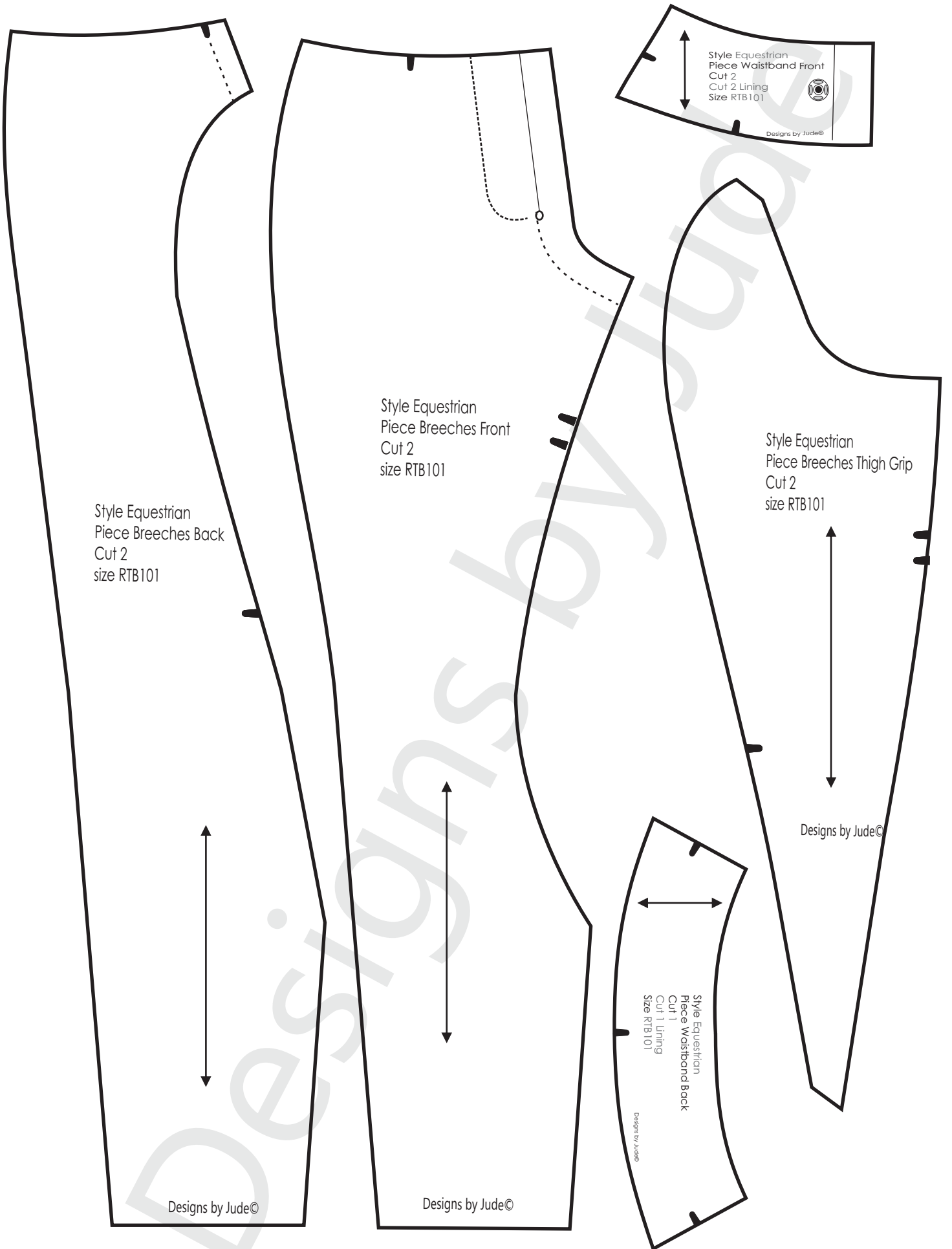
Style Equestrian  
Piece Neck Scarf  
Cut 2  
Size RTB101

Style Equestrian  
Piece Front Facing  
Cut 2  
size RTB101

Style Equestrian  
Piece Coat Front Lining  
Cut 2  
size RTB101

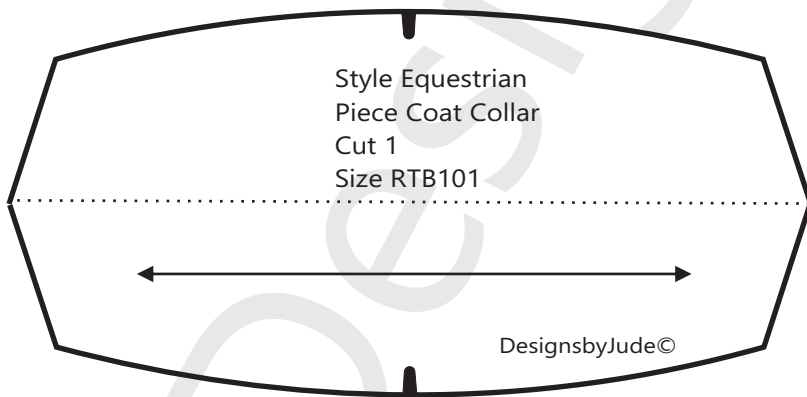
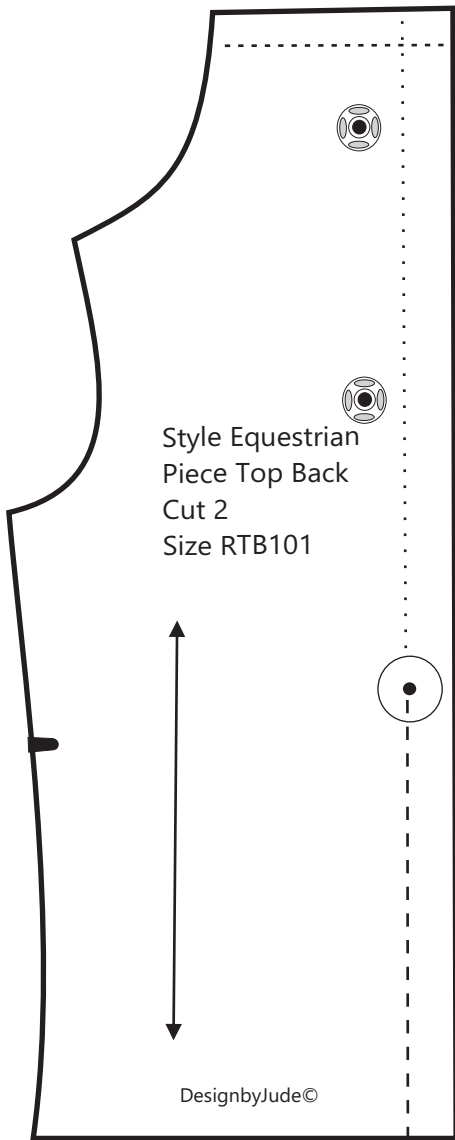
Designs by Jude©

Designs by Jude©



VDC Club Grace Collaboration

Equestrian  
for 16.5" RTB101 Grace



Fold Line	.....
Stitch Line	-----
Grain Line	↔
Notch	▴
Dot	•
Snap	⊙
©	Ⓜ

Seam allowance of 1/4"  
is already included in the  
dimensions of the pattern