

A few notes about PDF patterns. . . .

This PDF pattern prints on regular letter size paper (8.5" x 11").

Patterns containing larger pieces will need to be taped together before cutting out the fabric.

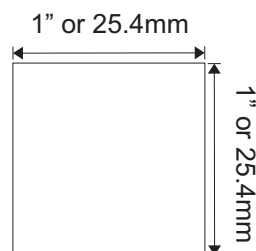
Be advised that this document needs to be printed to it's original scale. Please ensure that the printing options below are **not** selected.

Do Not: Rotate and Center, Fit to Page, Reduce to Fit or adjust the scale of this document.

Refer to the scale marker below to ensure that this copy is printed at the correct scale.

This PDF pattern is not licensed for commercial use and may not be shared, duplicated or distributed.

Designs by Jude, All RIGHTS RESERVED. Personal use only. Not licensed for commercial use.



Designs by Jude

www.fletcherpatterncompany.com



VDC Club Grace

Celtic Charm

for 16.5" RTB101 Dolls

Designed by

Tamara Casey



2024 Designs by Jude, All RIGHTS RESERVED. Personal use only.

VDC Club Grace Collaboration

Celtic Charm

For 16.5" RTB101 Body Dolls

Basic Instructions

You will get the most professional results by following a few recommendations.

- *Use a ¼" seam allowance unless noted otherwise on the pattern piece or instructions. This seam allowance is already included in the dimensions of the pattern.*
- *Press the garment as you work through each step. Press seams open where applicable.*
- *In un-lined garments, finish raw edges with an over-lock or zigzag stitch.*
- *Tape pieces together as indicated on the pattern before cutting.*

Note that RST = Right Sides Together and WST = Wrong Sides Together.

Fabric and Notions

Outfit:	cotton, calicos, cotton blend – ½ yard for the dress, ½ yard for the over dress
Lining:	Polyester, silk essence
Notions:	4/0 snap sets, matching thread, double sided hem tape, narrow embroidered trim, narrow elastic, ten 1/8" eyelets, ten 1/8" eyelet washers, fray check, eyelet setting tools.

Off-The-Shoulder Dress:

1. With right sides together, sew the dress side front sections to the dress front section. Press the seams open.
2. RST, sew the dress side back sections to the dress back sections. Press the seams open.
3. RST, matching notches, pin the upper sleeves to the front of the dress. Sew in place.
4. RST, pin the back of the sleeve to the dress back and sew in place.
5. Hem the outer edge of each sleeve flounce, using a narrow hem.
6. Run a gathering stitch on the inner curved edge of each flounce.
7. Pull the gathering stitch gently and pin to the upper sleeve edge with right sides together. Sew in place.
8. Press the seam allowance up.
9. Finish the lower raw edge of the dress facing with a zigzag or overlock stitch.
10. RST, pin the dress facing to the neckline.
11. With the facing side up, sew across the neckline.
12. Clip and trim the seam allowance and press the facing to the inside.
13. Topstitch across the neck edge to form the casing for the elastic.
14. Run the elastic through the casing, fit to the doll, secure the elastic at each end.
15. RST, sew the dress back to the dress front at the side seams. Press the seams open.
16. Hem the dress.
17. Sew the center back seam of the dress from the hem edge to the dot as indicated on the pattern.
18. Press the seam allowance to the left.
19. Fit the dress to the doll and mark the placement for the snaps.
20. Sew the snaps in place.

Lace-Up Over Dress:

1. Right sides together, sew the over dress side front sections to the front sections. Press the seams open.
2. RST, sew the over dress side back sections to the over dress back section. Press the seams open.
3. Sew the front sections to the back section at each shoulder. Press the seams open.
4. Repeat the above three steps with the lining pieces.
5. Apply trim to each side of the front if desired. (note: trim should be in 1" from the front raw edge).
6. RST, pin the lining to the over dress bodice and sew around both armholes and around the neck edge.
7. Clip and trim the seam allowance and turn the over dress bodice right side out by passing each front section to the back through the shoulder channel.
8. Press the bodice.
9. Open up the sides, pin the bodice to the bodice and lining to the lining and sew the side seams.

10. Turn up the hem edge of the lining ¼" and press.
11. Turn the front edge of the over dress in 1/2" on each side (this is where the eyelets will be set).
12. Check the fit to the doll with the off-the-shoulder dress on.
13. RST, sew the skirt front sections to the skirt back at the side seams. Press the seams open.
14. RST, sew the skirt lining front sections to the skirt lining back at the side seams. Press the seams open.
15. RST, pin the skirt lining to the skirt and sew along the hem and up both sides, leaving the waist edge unsewn.
16. Clip and trim the seam allowance. Turn the skirt assembly right side out and press.
17. Apply trim to the front sections. (place trim to match the bodice trim).
18. Run two rows of gathering across the top edge of the skirt assembly.
19. Gently pull the gathers to fit the over dress bodice matching the side seams, pin in place and then sew.
20. Press the seam allowance up and trim it near the front opening to reduce bulk.
21. Place a piece of double-sided hem tape between the layers in the left and right front opening. Iron it in place.
22. Hand finish the bodice lining to the waist seam.
23. Mark placement for the eyelets.
24. Punch the holes for each eyelet.
25. Apply fray check around the raw edge of each hole and let dry.
26. Press the right side of each eyelet through the hole from the right side of the bodice. Place an eyelet washer on the eyelet post and secure with a crop-a-dile or optional setting method. Repeat with all the eyelets.
27. Run a satin ribbon or thin cording through the eyelets and lace up.

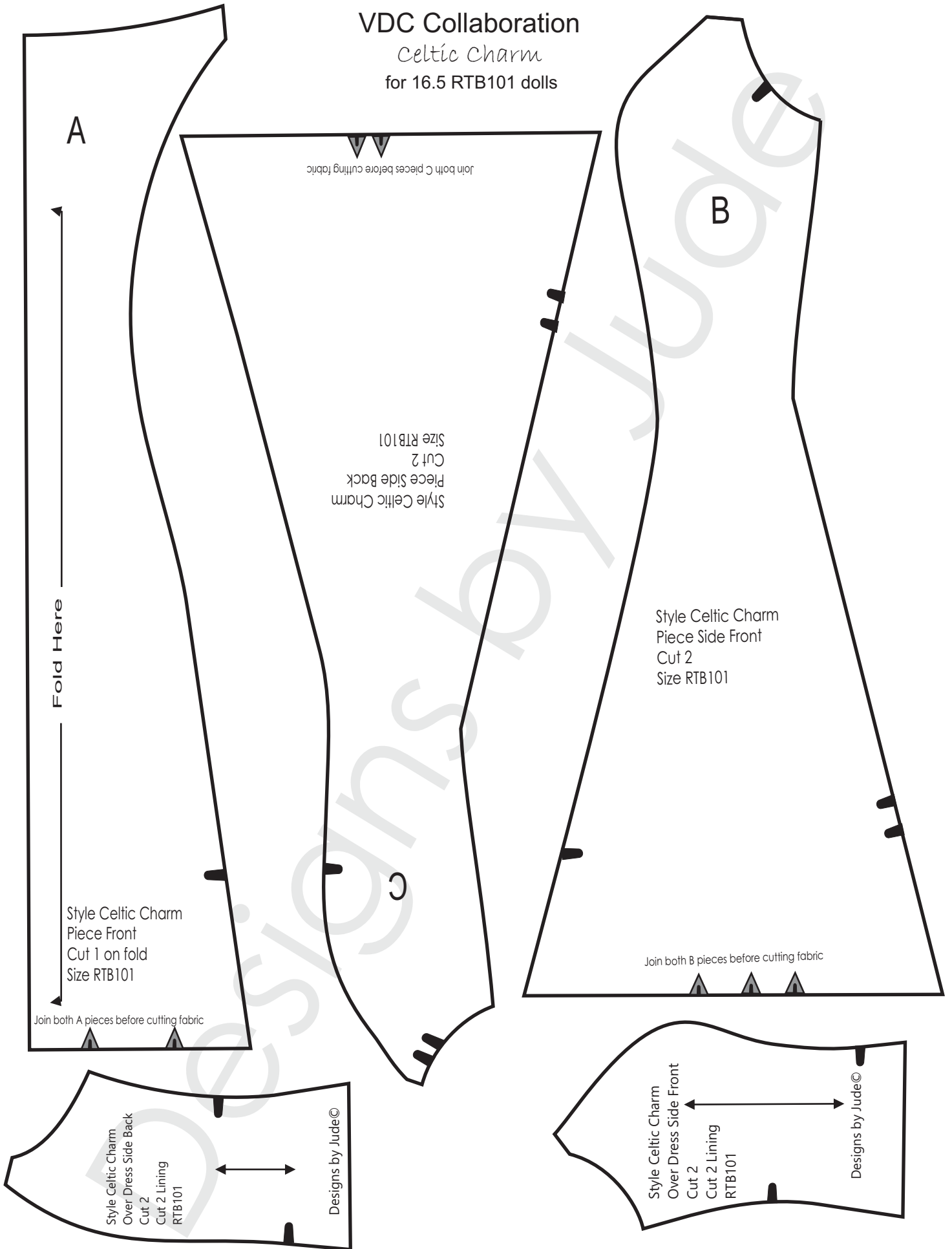
*There is a sewing tutorial for this pattern on our Designs by Jude YouTube channel. *

www.fletcherpatterncompany.com

VDC Collaboration

Celtic Charm

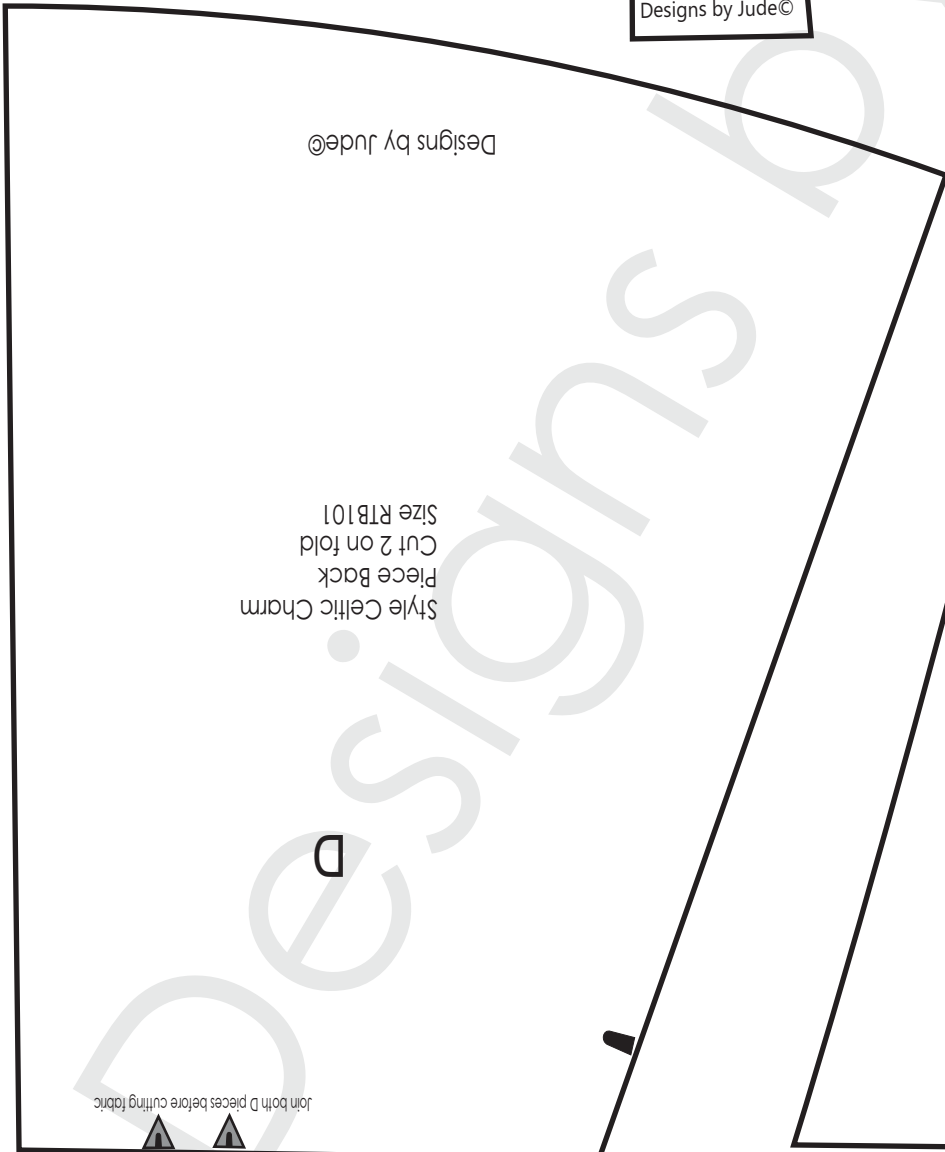
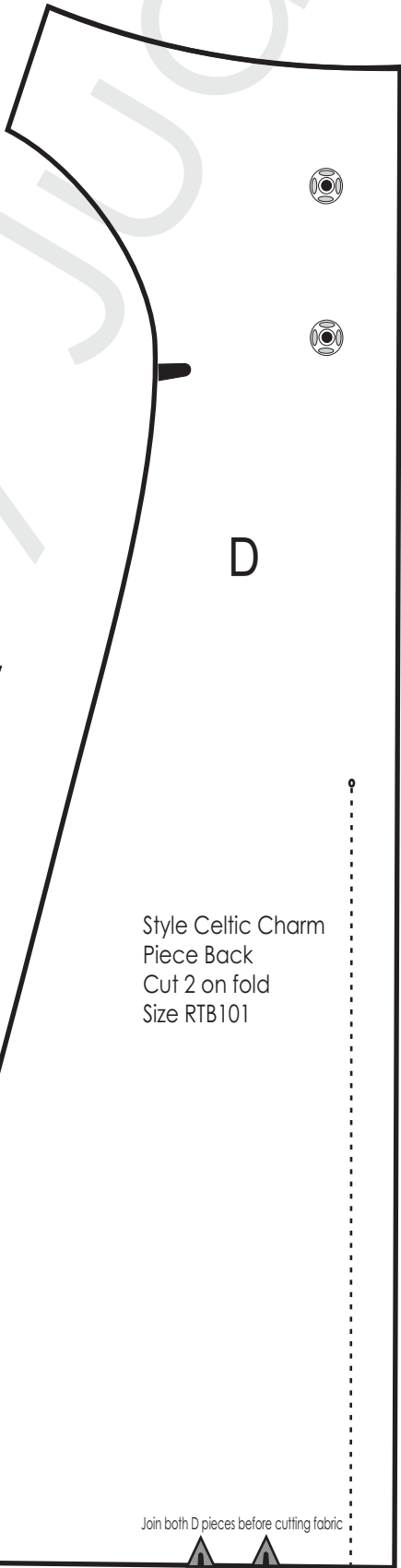
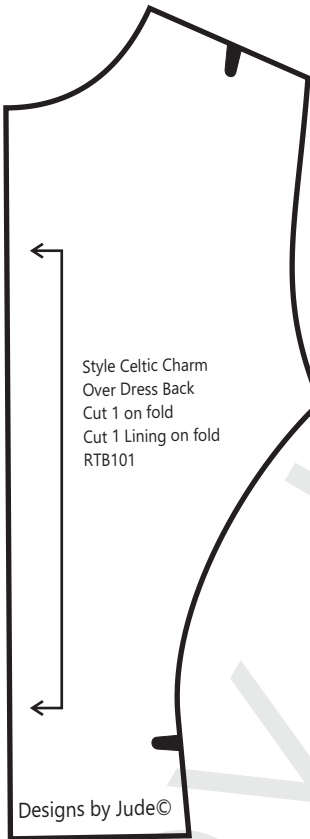
for 16.5 RTB101 dolls



VDC Collaboration

Celtic Charm

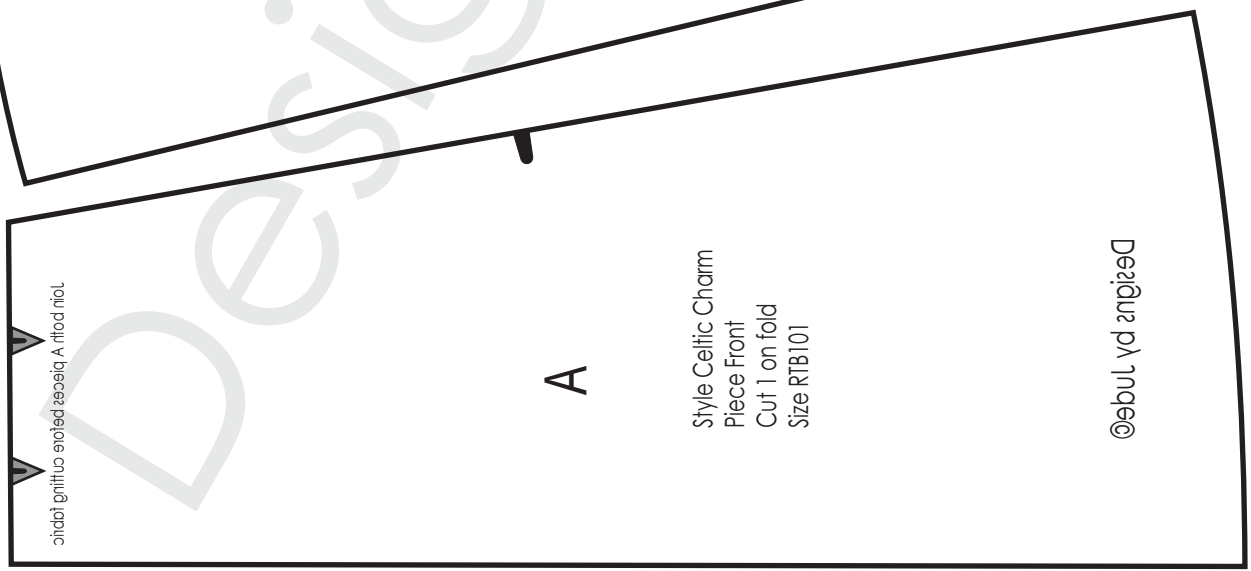
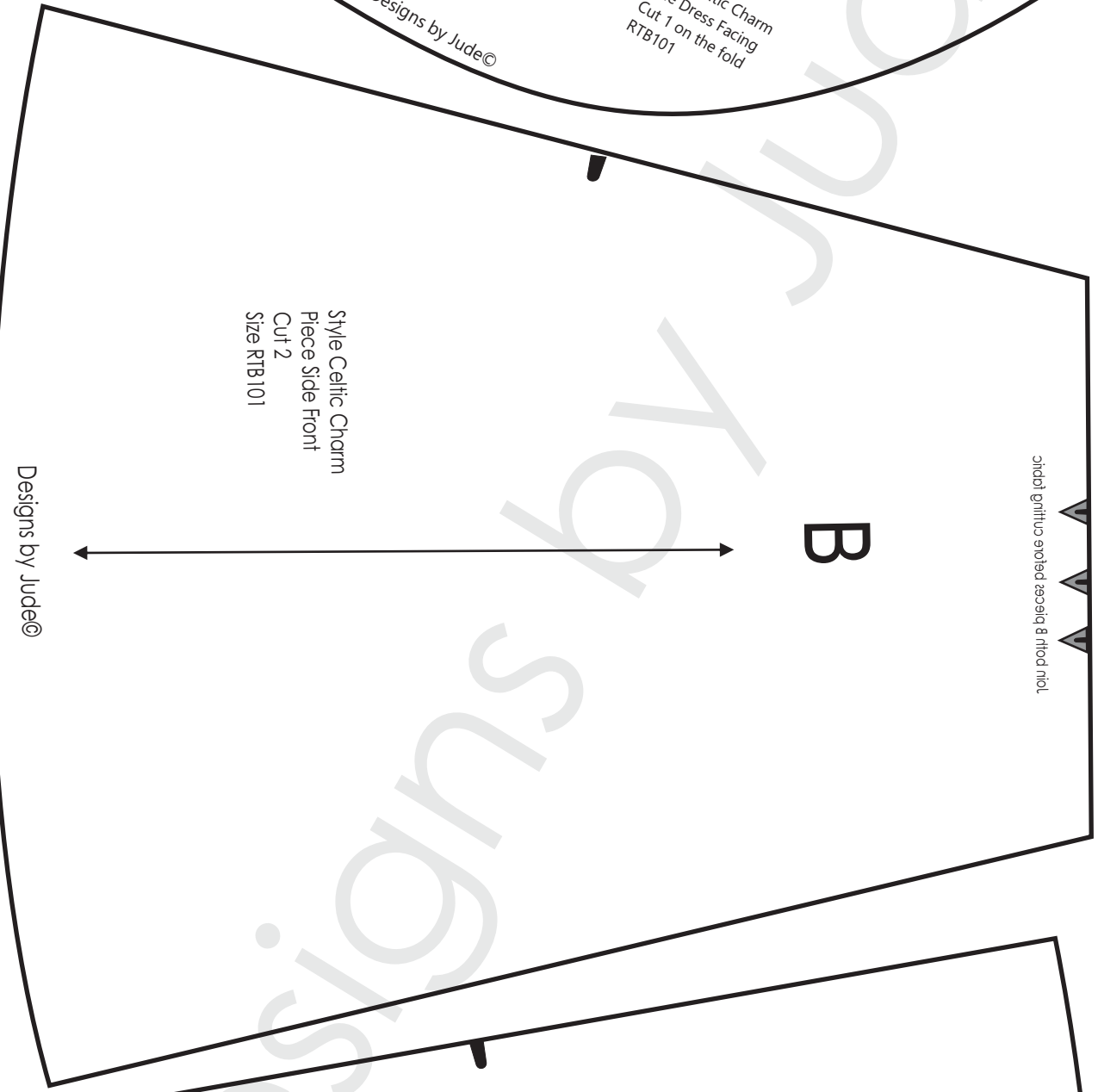
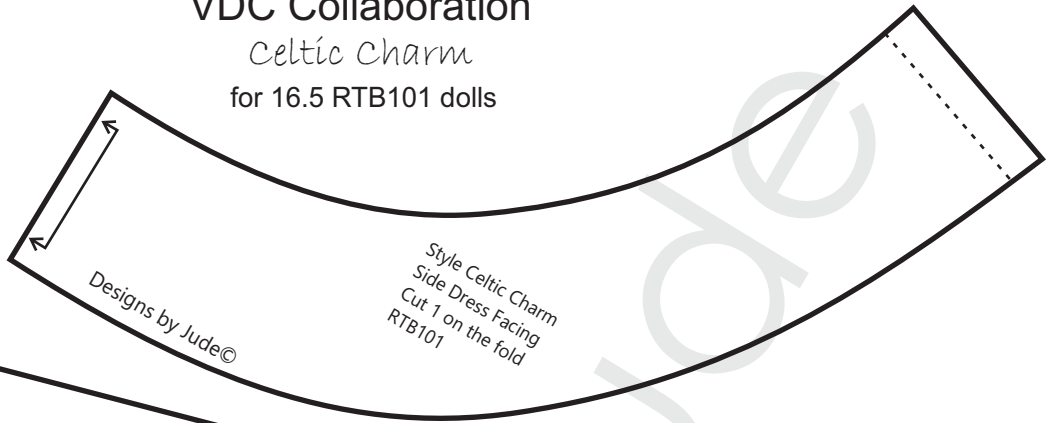
for 16.5 RTB101 dolls



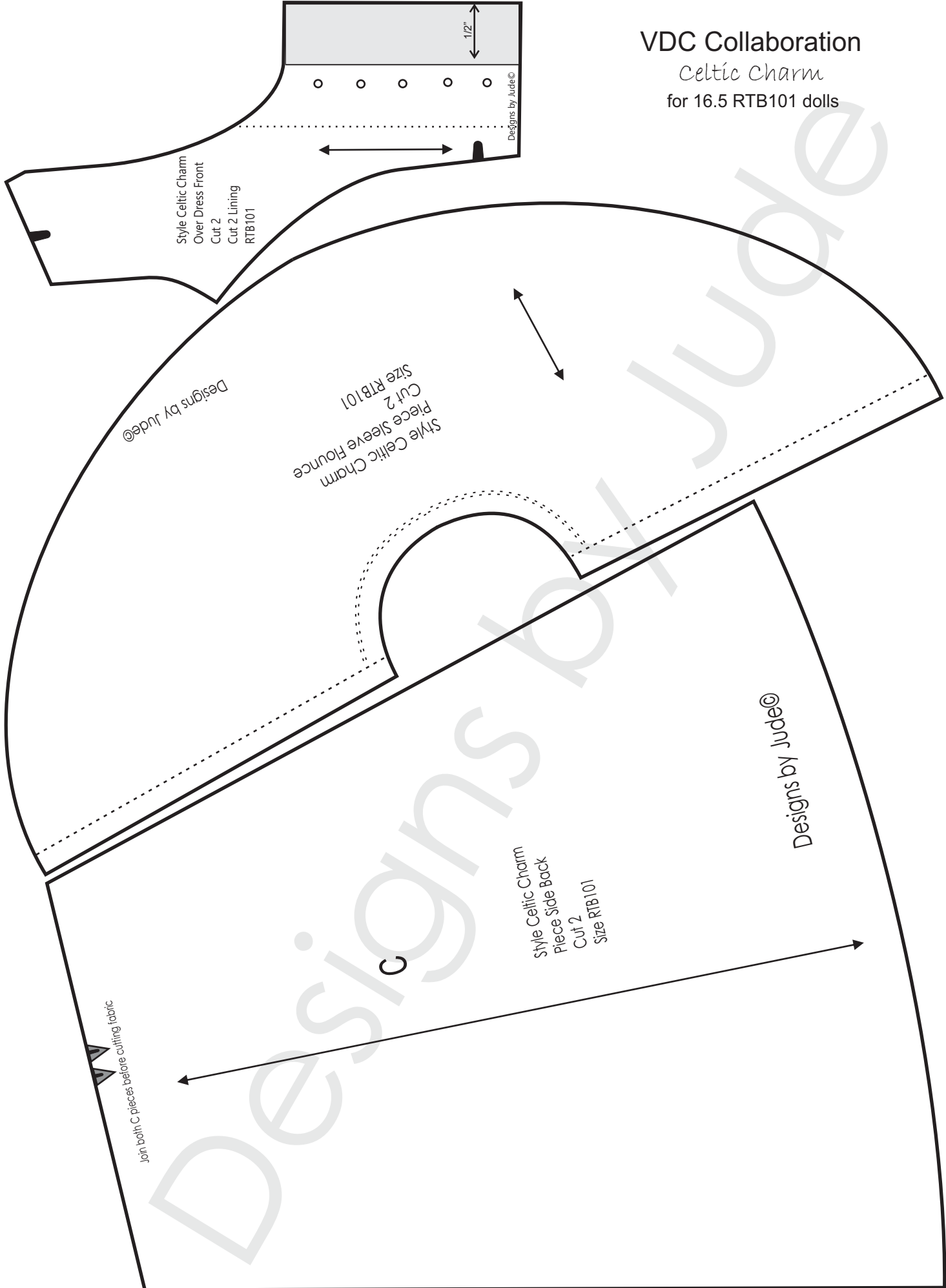
VDC Collaboration

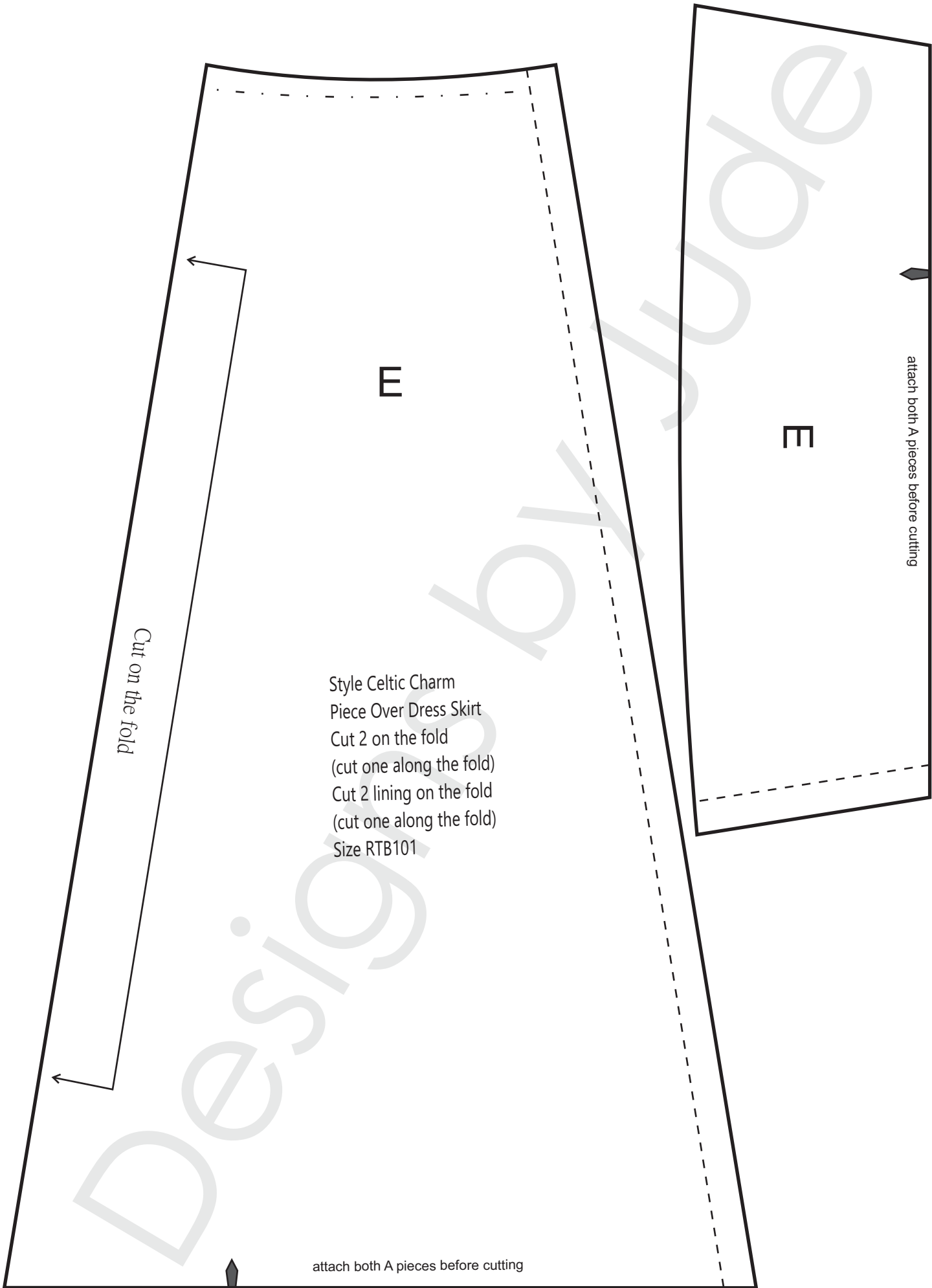
Celtic Charm

for 16.5 RTB101 dolls



VDC Collaboration
Celtic Charm
for 16.5 RTB101 dolls





E

E

Cut on the fold

attach both A pieces before cutting

Style Celtic Charm
Piece Over Dress Skirt
Cut 2 on the fold
(cut one along the fold)
Cut 2 lining on the fold
(cut one along the fold)
Size RTB101

attach both A pieces before cutting