

A few notes about PDF patterns from Designs by Jude. . . .

This PDF pattern requires legal size paper (8.5" x 14") or A4 size paper (8.27" x 11.69", 210mm x 297mm). It will **not** print on standard letter.

Patterns containing larger pieces will need to be taped together before cutting out the fabric.

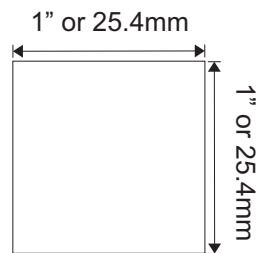
Be advised that this document needs to be printed to it's original scale. Please ensure that the printing options below are **not** selected.

Do Not: Rotate and Center, Fit to Page, Reduce to Fit or adjust the scale of this document.

Refer to the scale marker below to ensure that this copy is printed at the correct scale.

This PDF pattern is not licensed for commercial use and may not be shared, duplicated or distributed.

Designs by Jude, All RIGHTS RESERVED. Personal use only. Not licensed for commercial use.



Designs by Jude

www.fletcherpatterncompany.com



VDC Club Grace

Baker's Dozen
for 16.5" RTB101 Dolls



Designed by

Tamara Casey

\$12.95



VDC Club Grace Collaboration

Baker's Dozen

For 16.5" RTB101 Grace Dolls

Basic Instructions

You will get the most professional results by following a few recommendations.

- *Use a ¼" seam allowance unless noted otherwise on the pattern piece or instructions. This seam allowance is already included in the dimensions of the pattern.*
- *Press the garment as you work through each step. Press seams open where applicable.*
- *In un-lined garments, finish raw edges with an over-lock or zigzag stitch.*
- *Note that RST = Right Sides Together and WST = Wrong Sides Together.*

Fabric and Notions

Outfit: cotton

Lining: poly or silk essence

Notions: matching thread, snap sets, tiny buttons, 2" tiny zipper, 1/8" satin ribbon, fusible interfacing

Top

1. Sew the darts in the top front. Press the darts to the side.
2. Sew the darts in the top back sections. Press the darts to the side.
3. Sew the top back to the top front at the shoulders. Press the seams open.
4. Right sides together, sew the front facing pieces to the neck facing. Press the seams open.
5. Zigzag or serge the raw edge of the facing.
6. RST, pin the facing to the bodice and sew up the front and around the neck.
7. Clip and trim the seam allowance and turn the facing to the inside of the top.
8. Press.
9. Run a baste stitch between the dots on both sleeve caps.
10. Pull the baste gently, easing the sleeve to the armhole openings.
11. Pin the sleeves in place and then sew them.
12. With the right sides out, fold the sleeve cuffs in half and press.
13. Pin the cuffs to the sleeve edge on the wrong side of the sleeves. Sew in place.
14. Trim the seam allowance and press the sleeve cuffs up on the right side of the sleeves.
15. RST, sew the top back and front sections together at the side seams. Press seams open.
16. Hem the top.
17. Fit to the doll and mark placement for the snaps.
18. Sew snaps in place and finish the front with a few tiny buttons.

Skirt

1. Sew the center back seam of the skirt from the hem edge to the dot as indicated on the pattern.
2. Press the seam open.
3. Hand sew or machine the zipper into the opening.
4. With the zipper pull in the down position, trim off the extra zipper tape.
5. RST, pin the skirt front to the skirt back and sew the side seams. Press the seams open.
6. Sew the center back seam of the skirt lining from the hem edge to the dot.
7. Press the seam open.
8. RST, sew the skirt's front lining and back lining together at the side seams. Press the seams open.
9. RST, pin the skirt lining to the skirt and sew them together at the hem edge.
10. Clip and trim the seam allowance. Turn the skirt right side out and press the hem.
11. Hand-baste the skirt lining to the zipper tape.
12. Run a gathering stitch around the waist.
13. Apply single-sided fusible interfacing to the waistband.
14. Fold the waistband in half with the right side out and press.
15. RST, sew down the short right side with a ¼" seam allowance, do the same on the other side, but also stitch in ¼" to the notch and back stitch to create the under fold.
16. Trim away extra seam allowance.
17. Turn the corners right side out.
18. Pull the skirt gathering stitch gently to fit the waistband.
19. Pin one layer of the waistband to the skirt matching the finished edges and the under fold extending past the edge.
20. Sew the waistband to the skirt.
21. To reduce bulk, you can trim down the skirt seam allowance.
22. Press the seam up toward the waistband.
23. Turn the raw edge of the waistband up ¼" and press.
24. Hand finish the inside of the waistband to the inside covering the waist seam.
25. Fit to your doll and mark the placement for the snap. Sew the snap in place.

Apron

1. RST, pin the apron lining to the apron.
2. Sew them together on all sides, leaving the waist edge open.
3. Trim the seam allowance, then turn the apron right side out and press.
4. Add satin ribbon trim to the apron ¼" from the finished edge.
5. Prepare the apron tie by folding it in half lengthwise with right sides together.
6. Starting at one end, sew across the tie to the other end, leaving an opening for the apron as indicated on the pattern piece.
7. Clip and trim the seam allowance. Turn the tie right side out and press.
8. Slip the apron into the unsewn opening. Topstitch across the length of the tie.

Hat

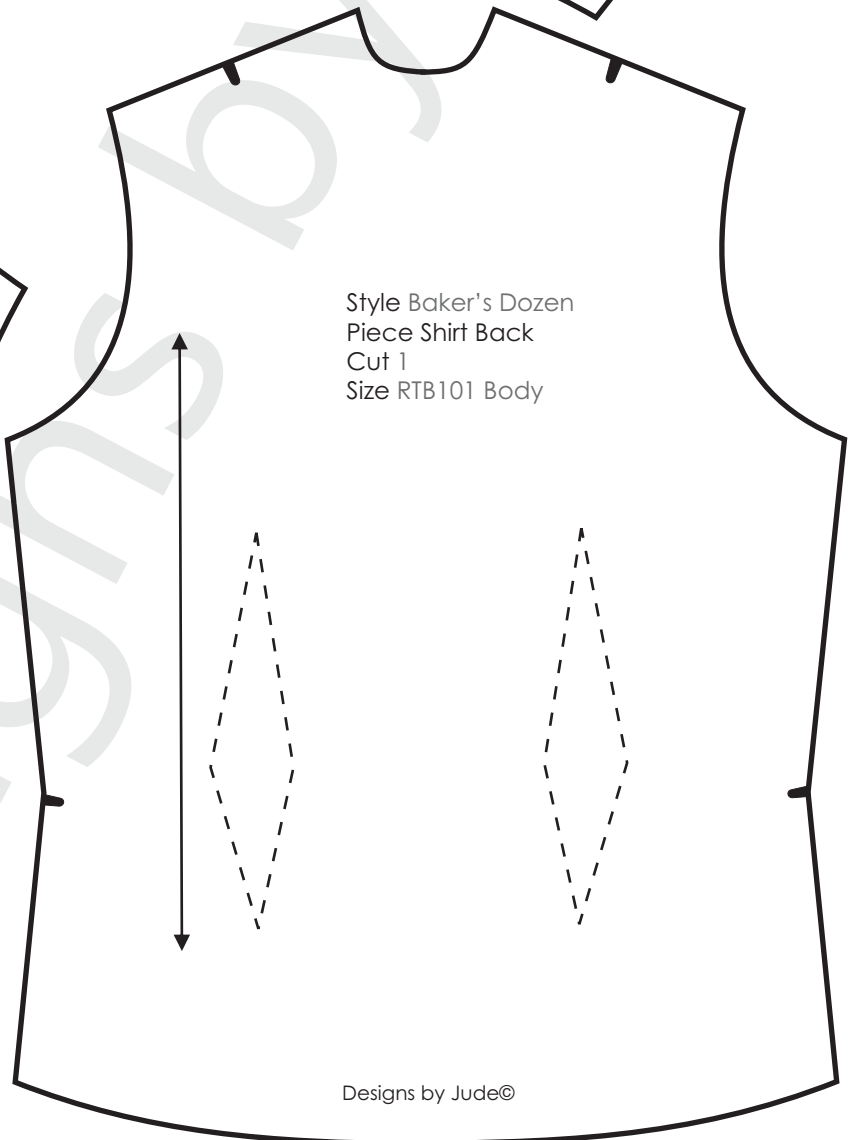
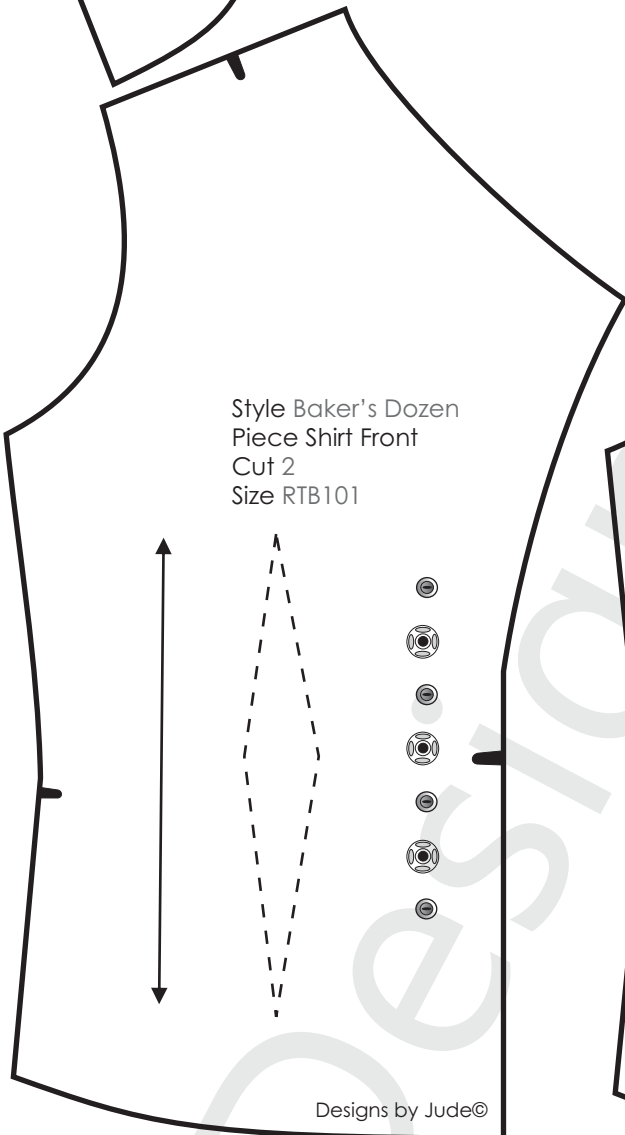
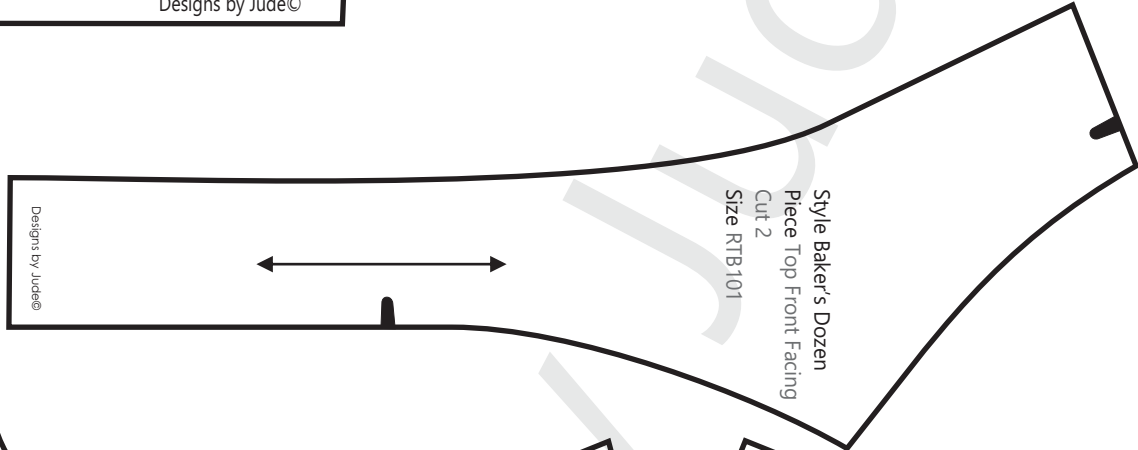
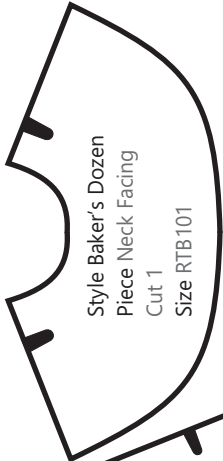
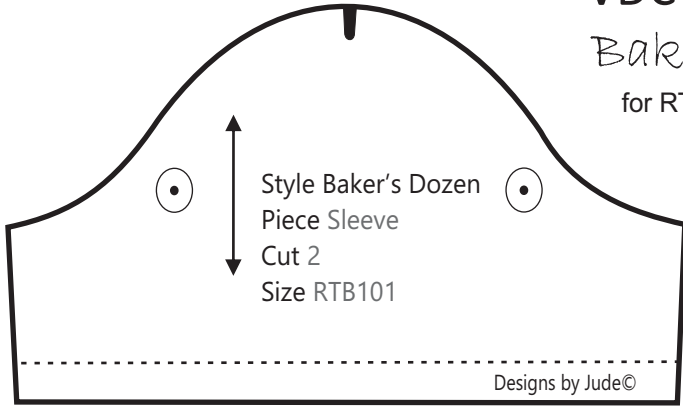
1. RST, sew the hat top pieces together. Clip seam and press.
2. RST, sew the center back seam of the hat brims. Press the seam open.
3. RST, sew the center back seam of the brim lining pieces. Press the seam open.
4. RST, pin the brim lining to the brim and sew the curves edge.
5. Clip the seam allowance, turn and press.
6. Apply satin ribbon trim to the finished edge of the hat brim.
7. Matching the center back seams, pin the hat brim to the hat top overlapping the brim at the front.
8. Sew the brim in place. Trim down the seam allowance to reduce bulk.
9. Sew the hat top lining pieces together, leaving an opening in the top to turn the hat right sides out.
10. RST, pin the hat lining to the hat and sew them together.
11. Trim the seam allowance, push the lining up into the hat and press the edge.
12. Hand finish the opening used to turn the hat.

There is a sewing tutorial for this pattern on our Designs by Jude YouTube channel.
www.fletcherpatterncompany.com

VDC Club Grace

Baker's Dozen

for RTB101 Grace dolls



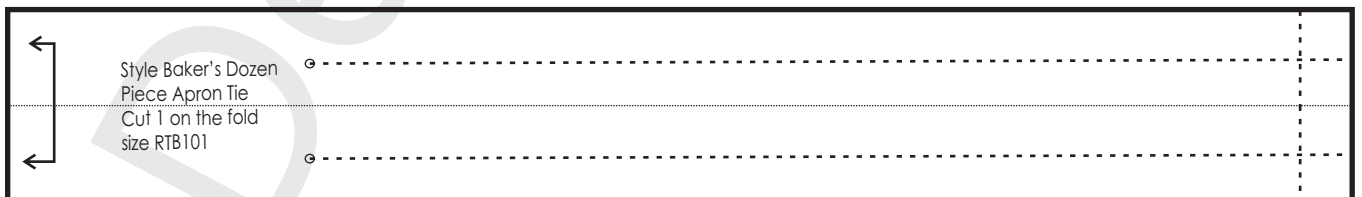
VDC Club Grace

Baker's Dozen

for RTB101 Grace dolls

Style Baker's Dozen
Piece Skirt Front
Cut 1 on the fold
Cut 1 Lining on the fold
size RTB101

DesignsbyJude©



Style Baker's Dozen
Piece Skirt Back
Cut 2
Cut 2 lining
size RTB101

Fold Line
Stitch Line - - - - -
Grain Line ← →
Notch ● Dot ◉ Snap ⊗

Seam allowance of 1/4"
is already included in the
dimensions of the pattern

DesignsbyJude©

Style Baker's Dozen
Piece Apron
Cut 1
Cut 1 lining
size RTB101

DesignsbyJude©

Style Baker's Dozen
Piece Hat Top
Cut 2
Cut 2 lining
size RTB101

front

Style Baker's Dozen
Piece Hat Brim
Cut 2
Cut 2 lining
size RTB101