

A few notes about PDF patterns from Designs by Jude. . . .

This PDF pattern requires legal size paper (8.5" x 14") or A4 size paper (8.27" x 11.69", 210mm x 297mm). It will **not** print on standard letter.

Patterns containing larger pieces will need to be taped together before cutting out the fabric.

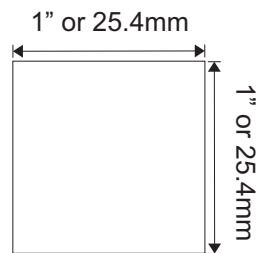
Be advised that this document needs to be printed to it's original scale. Please ensure that the printing options below are **not** selected.

**Do Not:** Rotate and Center, Fit to Page, Reduce to Fit or adjust the scale of this document.

Refer to the scale marker below to ensure that this copy is printed at the correct scale.

This PDF pattern is not licensed for commercial use and may not be shared, duplicated or distributed.

Designs by Jude, All RIGHTS RESERVED. Personal use only. Not licensed for commercial use.



# Designs by Jude

www.fletcherpatterncompany.com

## VDC Club Grace

Answer Dress  
for 16.5" RTB101 Dolls



Designed by  
*Tamara Casey*

\$12.95



# VDC Club Grace Collaboration

## The Answer Dress

For 16.5" RTB101 Grace Dolls

### Basic Instructions

You will get the most professional results by following a few recommendations.

- *Use a 1/4" seam allowance unless noted otherwise on the pattern piece or instructions. This seam allowance is already included in the dimensions of the pattern.*
- *Press the garment as you work through each step. Press seams open where applicable.*
- *In un-lined garments, finish raw edges with an over-lock or zigzag stitch.*
- *Note that RST = Right Sides Together and WST = Wrong Sides Together.*

### Fabric and Notions

Dress: cotton, woven, blends  
Lining: poly, lightweight cotton, silk essence  
Notions: matching thread, snap sets, hooks & eyes

### Dress with a Shoulder Tie

1. Sew the darts in the dress bodice front. Press the darts.
2. Sew dart in the dress bodice back. Press the dart.
3. Sew the bodice front and bodice back together at the side seam. Press the seam open.
4. Sew the darts in the dress bodice front lining. Press the darts.
5. Sew the dart in the dress bodice back lining. Press the dart.
6. Sew the bodice lining pieces together at the side seam. Press the seam open.
7. RST, pin the lining to the bodice.
8. Sew the two pieces together, leaving the waist edge unsewn.
9. Check both sides, then clip and trim the seam allowance.
10. Turn the bodice right side out and press.
11. Turn the waist edge of the lining up 1/4" and press.
12. RST, pin the skirt lining to the skirt.
13. Sew along the hem and up both sides, leaving the waist edge unsewn.
14. Clip and trim the seam allowance, turn the skirt right side out, and press.
15. Baste the lining to the skirt at the waist edge.
16. Take some small clips around the curved edge at the waist.
17. Pin the skirt to the bodice with the right sides together matching the finished edges at each side
18. Sew the waist seam.
19. Press the seam allowance up and hand-finish the folded bodice lining edge to the seam.
20. Attach a hook and eye closure.
21. With the dress on your doll, tie the shoulder bows. An alternative to tying the shoulder bow is to twist the two pieces together and tack the bow ends in place on each side.
22. Construct the mirrored side of the dress by following the above steps.

### Strapless Dress

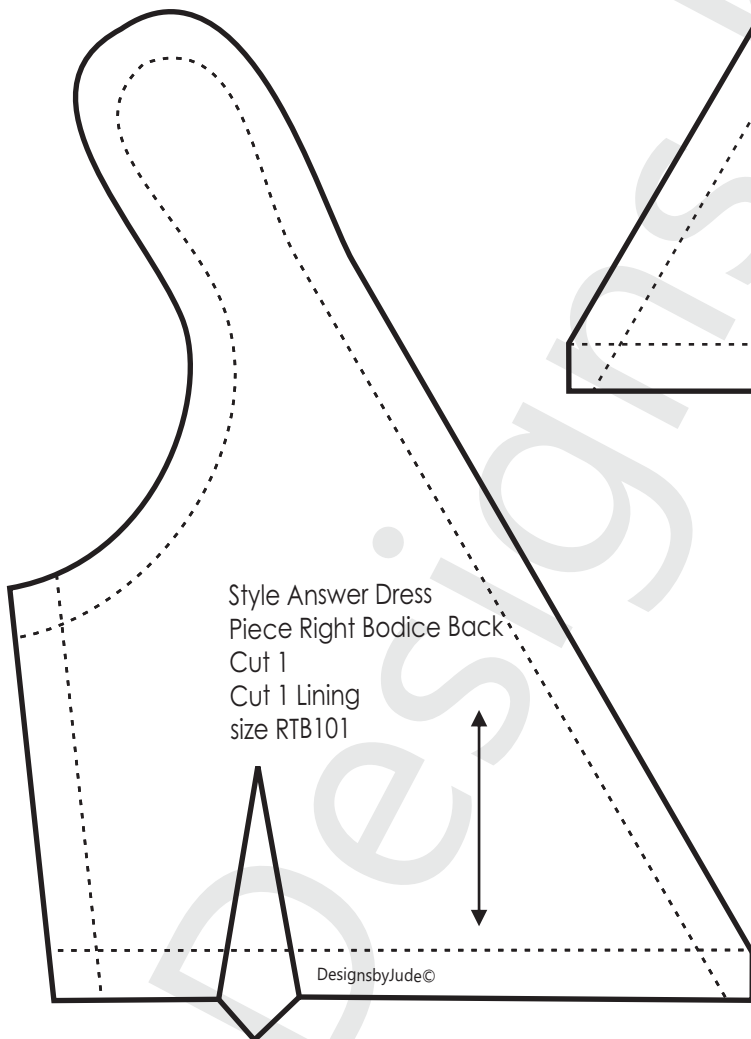
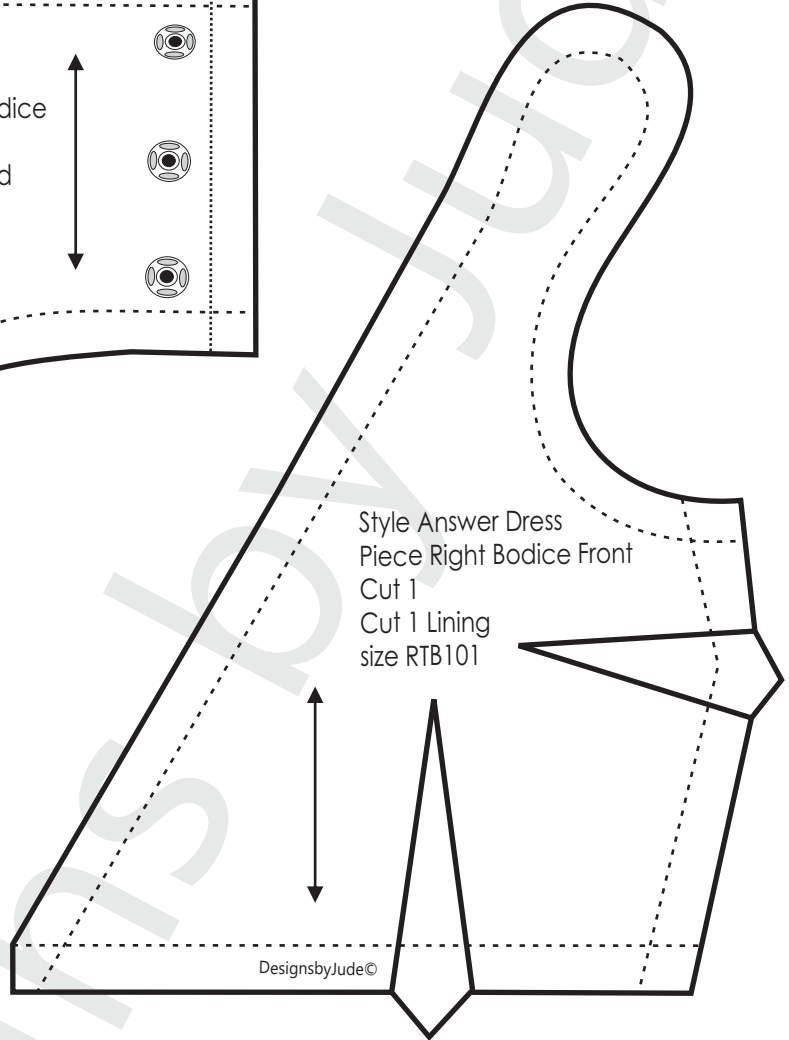
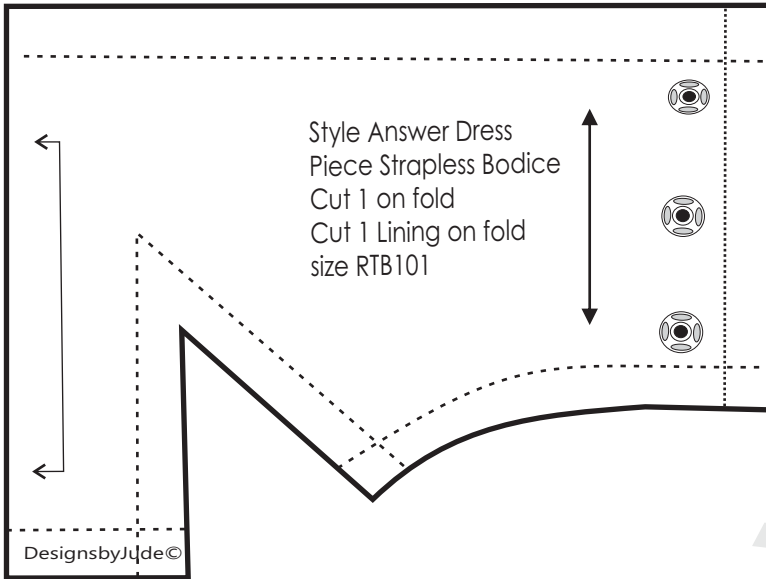
1. Sew the darts in the bodice. Press the darts.
2. Sew the darts in the bodice lining. Press the darts.
3. With right sides together pin the bodice lining to the bodice.
4. With the lining side up, sew across the top edge and down the left back opening stopping 1/4 from the waist.
5. Trim the seam allowance and turn the bodice right side out. Press the bodice.
6. Turn the waist edge of the lining up 1/4" and press.
7. RST, pin the skirt lining to the skirt and sew the hem edge.
8. Trim the seam allowance and press the hem edge.
9. Zigzag the lining and skirt together at the left and right back openings.
10. Baste the lining and the skirt together at the waist.
11. Take some small clips around the curved edge of the waist.
12. Pin the bodice to the skirt and sew the waist seam. Press the seam up.
13. Zigzag the bodice lining to the bodice at the right back opening.
14. Hand finish the folded edge of the bodice lining to the waist seam.
15. Sew the center back seam of the dress from the hem edge to the dot as indicated on the pattern.
16. Press the seam to the side.
17. Fit the dress to the doll and mark the placement for the snaps.
18. Sew the snaps in place.

There is a sewing tutorial for this pattern on our Designs by Jude YouTube channel.  
[www.fletcherpatterncompany.com](http://www.fletcherpatterncompany.com)

# VDC Club Grace

## The Answer Dress

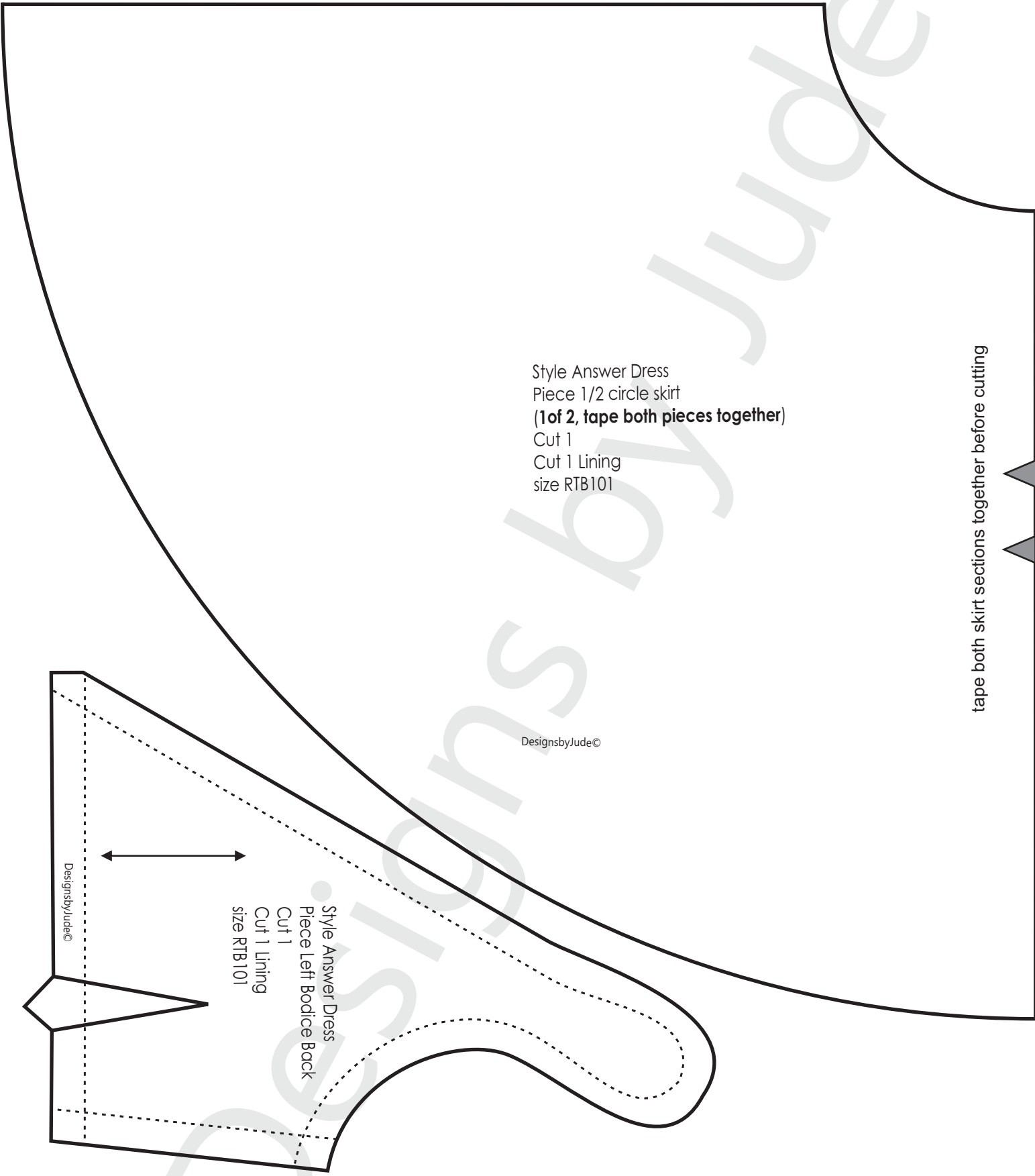
for RTB101 Grace dolls



Fold Line .....  
 Stitch Line - - - - -  
 Grain Line ← →  
 Notch ● Dot ⊙ Snap ⊗

Seam allowance of 1/4" is already included in the dimensions of the pattern

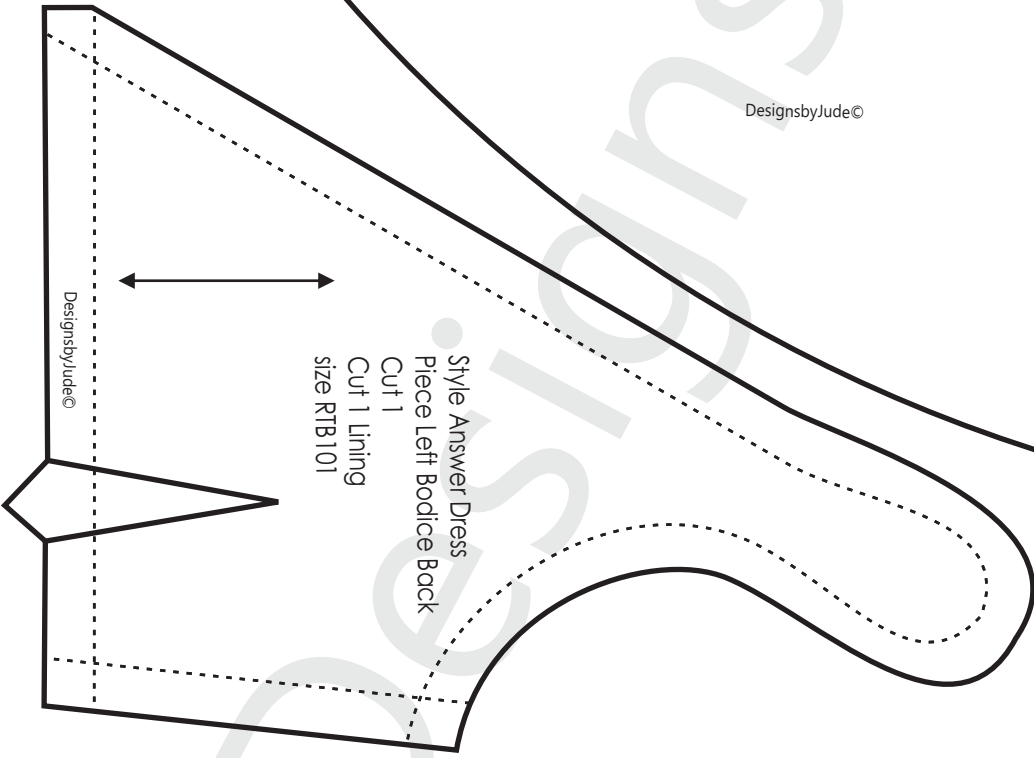
VDC Club Grace  
The Answer Dress  
for RTB101 Grace dolls



Style Answer Dress  
Piece 1/2 circle skirt  
**(1 of 2, tape both pieces together)**  
Cut 1  
Cut 1 Lining  
size RTB101

tape both skirt sections together before cutting

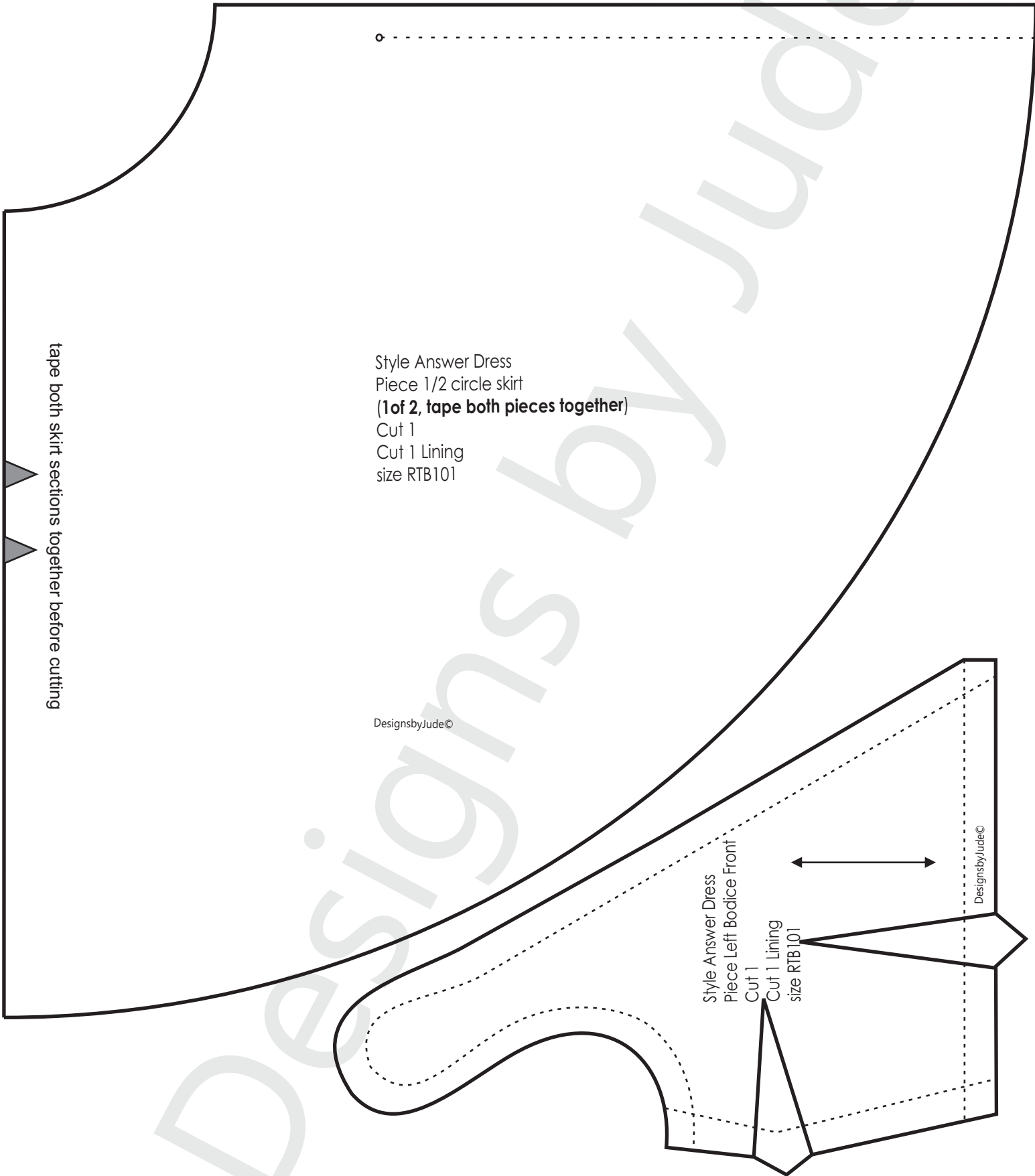
DesignsbyJude©



Style Answer Dress  
Piece Left Bodice Back  
Cut 1  
Cut 1 Lining  
size RTB101

DesignsbyJude©

VDC Club Grace  
The Answer Dress  
for RTB101 Grace dolls



tape both skirt sections together before cutting

Style Answer Dress  
Piece 1/2 circle skirt  
**(1 of 2, tape both pieces together)**  
Cut 1  
Cut 1 Lining  
size RTB101

DesignsbyJude©

Style Answer Dress  
Piece Left Bodice Front  
Cut 1  
Cut 1 Lining  
size RTB101



DesignsbyJude©