

Jointed Dolly Dingle

2020 Summer Fling Paper Doll

by Diana E. Vining



Supplies Needed:

Template, printed on card stock
Scissors
Pencil
8 Mini Brads
Cardboard
Glue

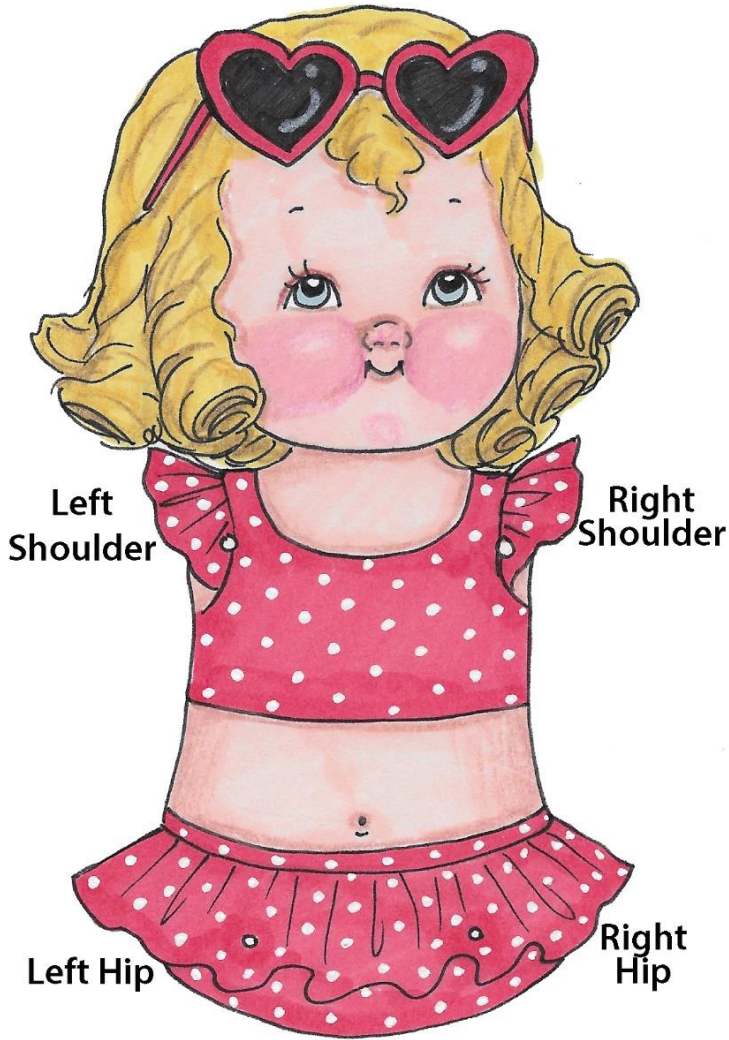
Directions

1. Cut out paper doll pieces, and glue onto heavy cardstock or cardboard. (Helpful Hint: To keep the pieces organized, you can label them on the back as you go along)
2. Cut out paper doll pieces once again (and label again if needed), and arrange the pieces in place beside the paper doll's body.
3. Poke holes on the dots on all pieces.
4. Use brads to tightly attach the shoulders behind the body.
5. Use brads to tightly attach the lower arms at the elbows , with the lower piece overlapping.
6. Use brads to tightly attach the hips behind the body.
7. Use brads to tightly attach the lower legs at the knees, with the upper piece overlapping.

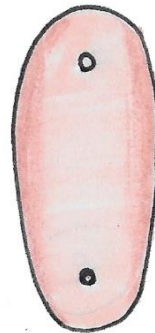
Now you have a perfect traveling companion! She can be posed in many different ways, AND you can fold her up for easy traveling!

Jointed Dolly Dingle

2020 Summer Fling Paper Doll

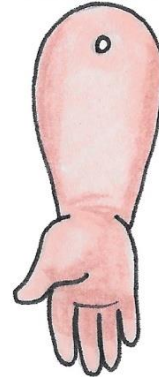


Left Shoulder

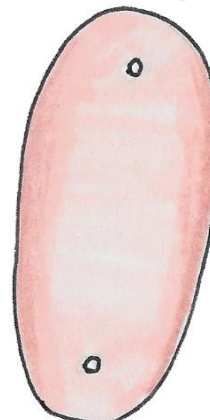


Left Elbow

Left Elbow

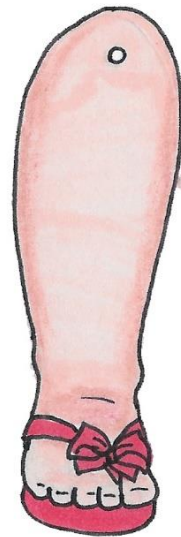


Left Hip



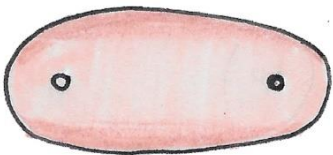
Left Knee

Left Knee

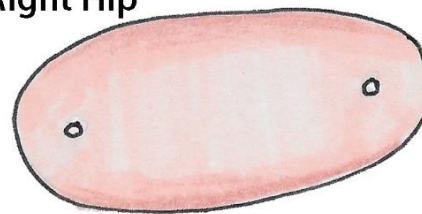


Right Hip

Right Shoulder

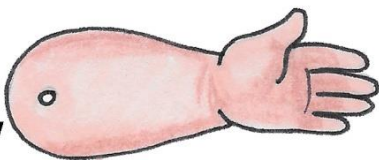


Right Elbow



Right Knee

Right Elbow



Right Knee

