



17 March 2020 at 16:54

Felt hat instructions. Hazel Mould.Uk.

This hat will fit a head measuring 9 inches .

I use hand dyed felt, it's a bit more pliable and thicker than the felt squares from Hobby Shops.

Details of where I buy from will be at the end of the instructions.

.....

Step 1. Cut out 7 sections of the base shape, then cut out 2 of the brim shape.

Step 2. Stitch the base shapes in sets of 2 just a 1/8th stitch lime, I usually make these all by hand, as this gives the stitches a bit more movement. Sew 3 sets leaving 1 free, now sew the pairs together making ing sure you keep right sides together as you work around, before you attach the last section lightly press, now sew the last section both side edges to join up the base of the hat, you will be left with a small hole opening on the top of the hat.

Step 3. Sew the outer edge of the 2 brims previously cut together, turn through and gently press.

Step 4. Now attach to the edge of the hat base, pin in place the two side points should meet, put these in place first, then ease the rest around hat base, keeping right side to right side, again I stitch by hand for more movement on the stitch, now with the underside of the brim attach to the inside of the hat.

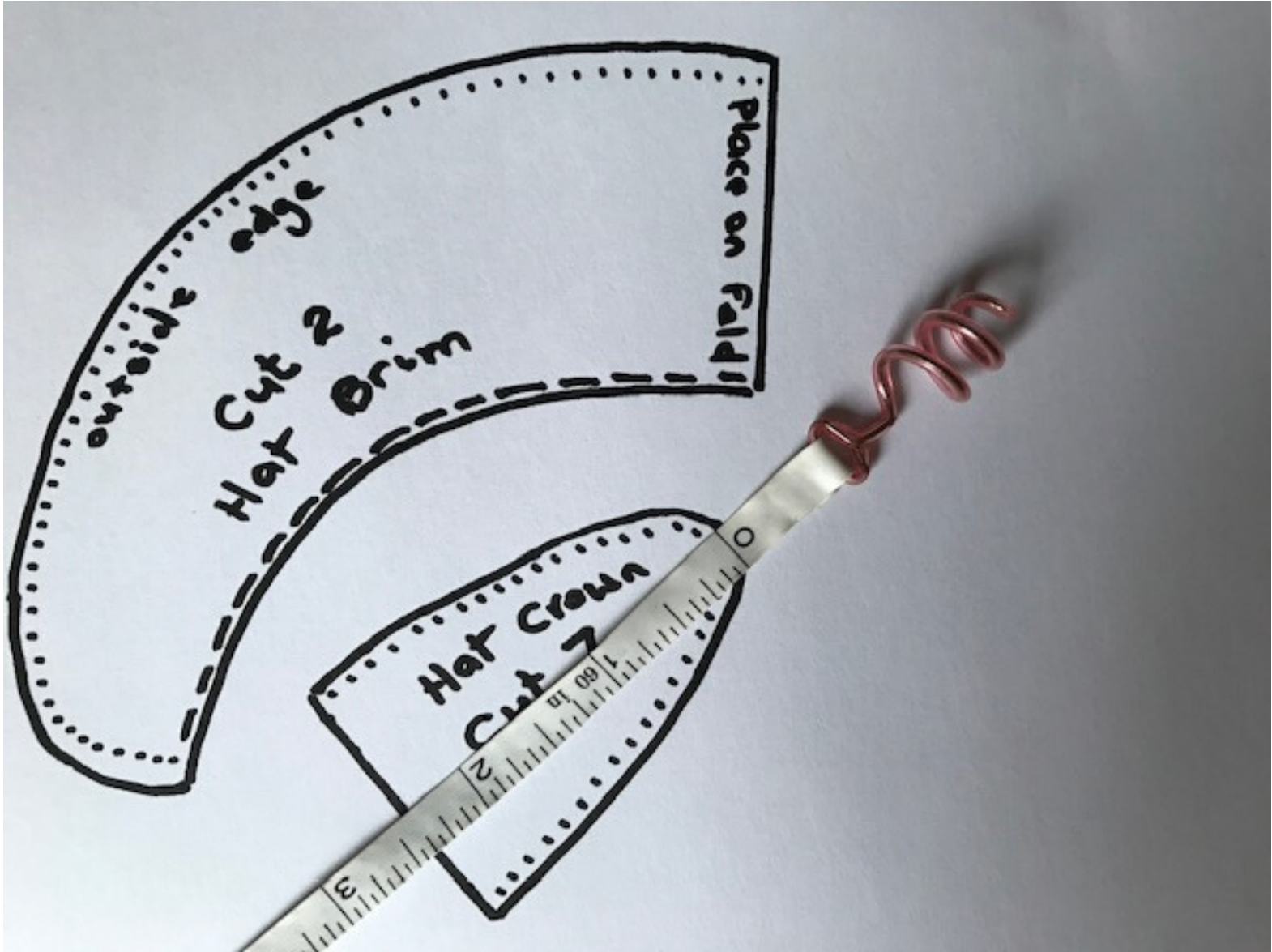
Step 5. For hole in centre top, with double thread do a running stitch and pull the hole closed, take needle through to the inside of the hat and secure .

Step 6. Now add whatever design you like to the front turn up of the hat.

This is a nice easy project even for a beginner.

I have taken step by step pictures for you, have fun and remember you can enlarge or make smaller this pattern to fit your dolls head, remember to always measure once your wig is on.





outside edge

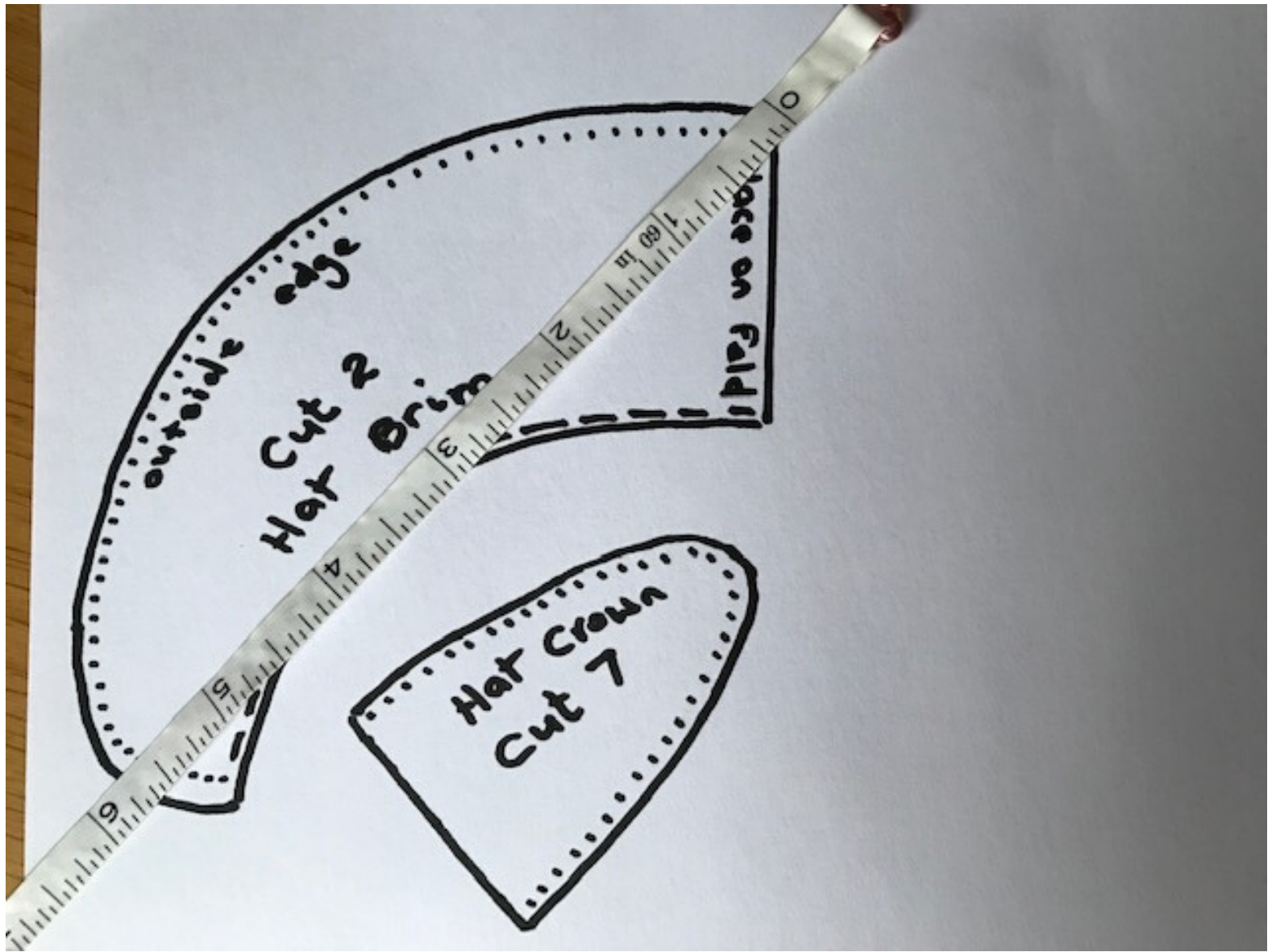
Cut 2

Hat Brim

Place on Fold!

Hat Crown

Cut 2

































Thank you, Hazel!

